

cassa brickell

Townhouse 1

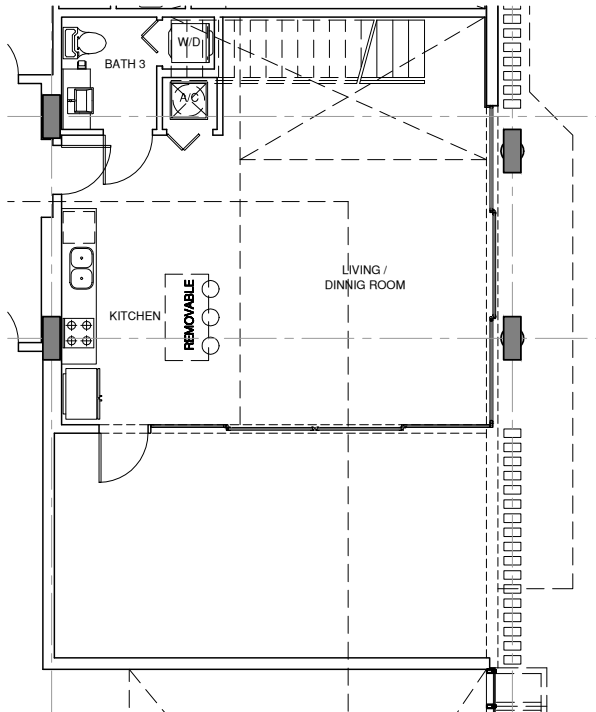
Ground Floor & 2nd Floor

2 Bed / 2.5 Bath

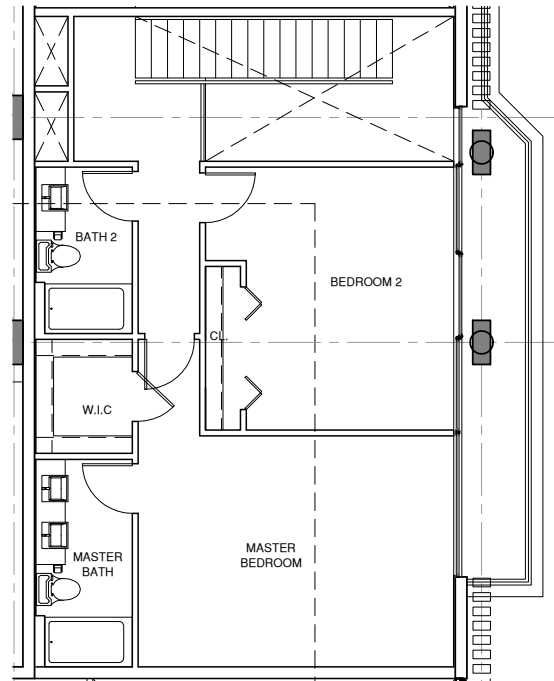
Living Area: 1,472 Sq. Ft.

Balcony Area: 490 Sq. Ft.

Ground Floor



2nd Floor



ModernLiving

Stated dimensions are measured to the exterior boundaries of the exterior walls and the centerline of interior demising walls and in fact vary from the dimensions that would be determined by using the description and definition of the "Unit" set forth in the Declaration (which generally only includes the interior airspace between the perimeter walls and excludes interior structural components). For your reference, the area of the Unit, determined in accordance with those defined unit boundaries, is 1,330 sq. ft.. Note that measurements of rooms set forth on this floor plan are generally taken at the greatest points of each given room (as if the room were a perfect rectangle), without regard for any cutouts. Accordingly, the area of the actual room will typically be smaller than the product obtained by multiplying the stated length times width. All dimensions and ceiling heights are approximate and may vary with actual construction, and all floor plans and development plans are subject to change.

cassa brickell

Townhouse 2

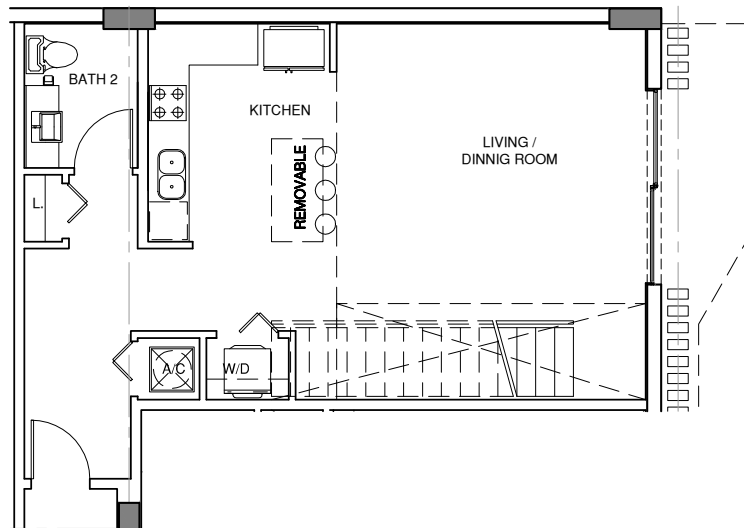
Ground Floor & 2nd Floor

1 Bed / 1.5 Bath

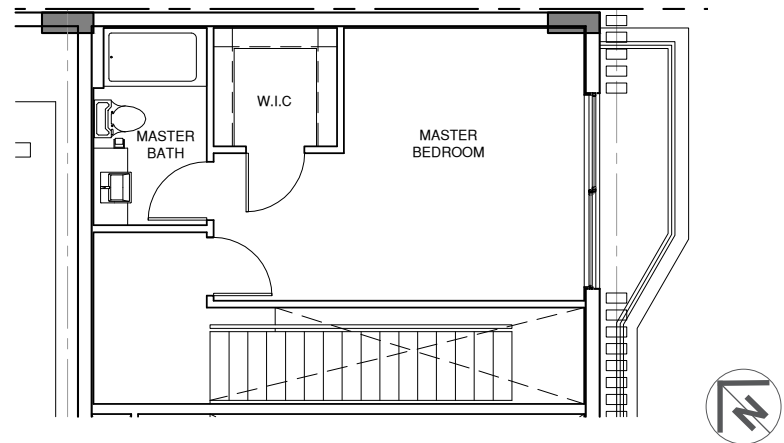
Living Area: 1,020 Sq. Ft.

Balcony Area: 65 Sq. Ft.

Ground Floor



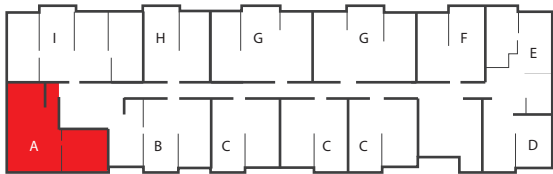
2nd Floor



ModernLiving

Stated dimensions are measured to the exterior boundaries of the exterior walls and the centerline of interior demising walls and in fact vary from the dimensions that would be determined by using the description and definition of the "Unit" set forth in the Declaration (which generally only includes the interior airspace between the perimeter walls and excludes interior structural components). For your reference, the area of the Unit, determined in accordance with those defined unit boundaries, is 907 sq. ft.. Note that measurements of rooms set forth on this floor plan are generally taken at the greatest points of each given room (as if the room were a perfect rectangle), without regard for any cutouts. Accordingly, the area of the actual room will typically be smaller than the product obtained by multiplying the stated length times width. All dimensions and ceiling heights are approximate and may vary with actual construction, and all floor plans and development plans are subject to change.

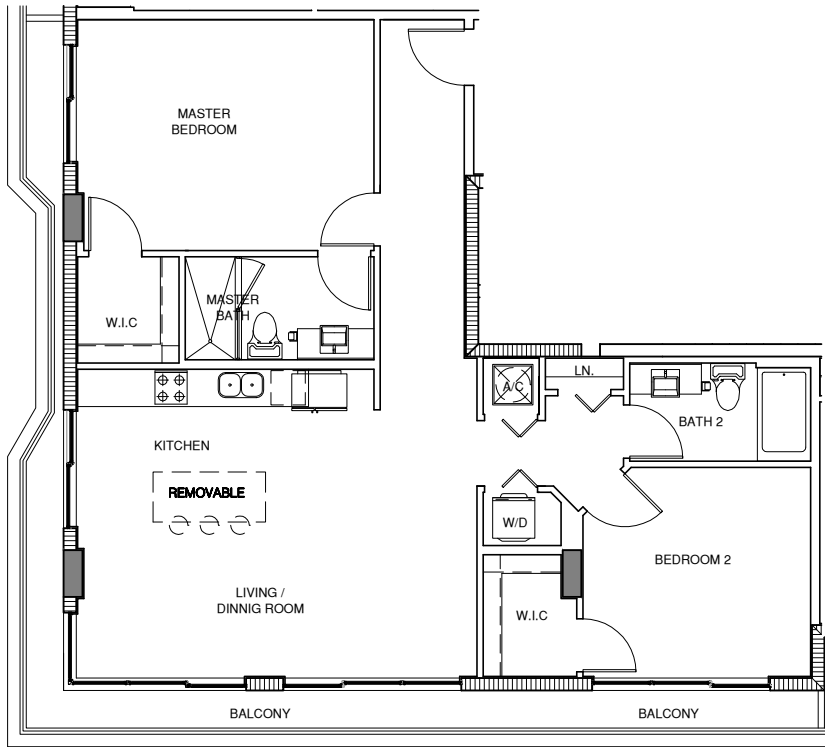
cassa brickell



Unit A

3rd & 6th floor
2 Bed / 2 Bath

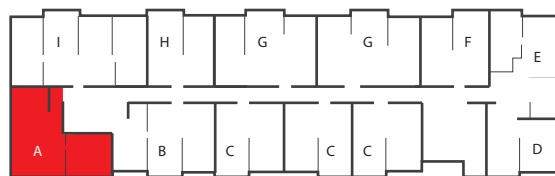
Living Area: 1,123 Sq. Ft.
Balcony Area: 219 Sq. Ft.



ModernLiving

Stated dimensions are measured to the exterior boundaries of the exterior walls and the centerline of interior demising walls and in fact vary from the dimensions that would be determined by using the description and definition of the "Unit" set forth in the Declaration (which generally only includes the interior airspace between the perimeter walls and excludes interior structural components). For your reference, the area of the Unit, determined in accordance with those defined unit boundaries, is 1,038 sq. ft.. Note that measurements of rooms set forth on this floor plan are generally taken at the greatest points of each given room (as if the room were a perfect rectangle), without regard for any cutouts. Accordingly, the area of the actual room will typically be smaller than the product obtained by multiplying the stated length times width. All dimensions and ceiling heights are approximate and may vary with actual construction, and all floor plans and development plans are subject to change.

cassa brickell

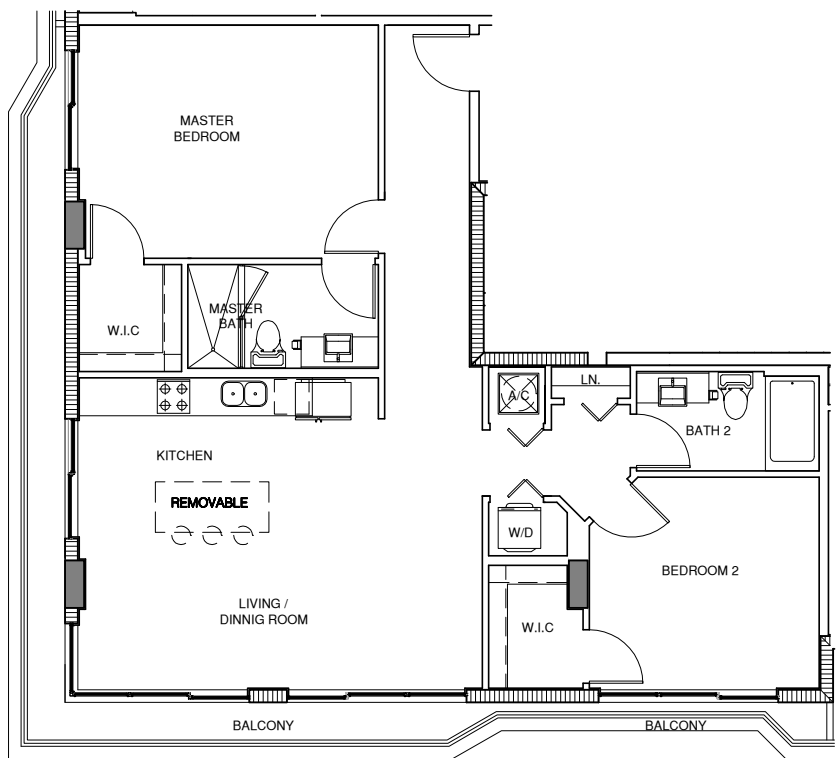


Unit A

4th & 7th Floor
2 Bed / 2 Bath

Living Area: 1,123 Sq. Ft.

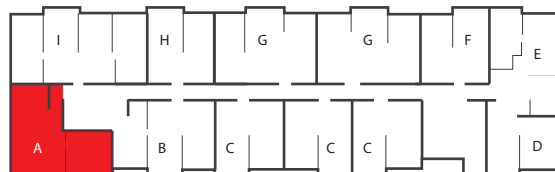
Balcony Area: 219 Sq. Ft.



ModernLiving

Stated dimensions are measured to the exterior boundaries of the exterior walls and the centerline of interior demising walls and in fact vary from the dimensions that would be determined by using the description and definition of the "Unit" set forth in the Declaration (which generally only includes the interior airspace between the perimeter walls and excludes interior structural components). For your reference, the area of the Unit, determined in accordance with those defined unit boundaries, is 1,038 sq. ft.. Note that measurements of rooms set forth on this floor plan are generally taken at the greatest points of each given room (as if the room were a perfect rectangle), without regard for any cutouts. Accordingly, the area of the actual room will typically be smaller than the product obtained by multiplying the stated length times width. All dimensions and ceiling heights are approximate and may vary with actual construction, and all floor plans and development plans are subject to change.

cassa brickell



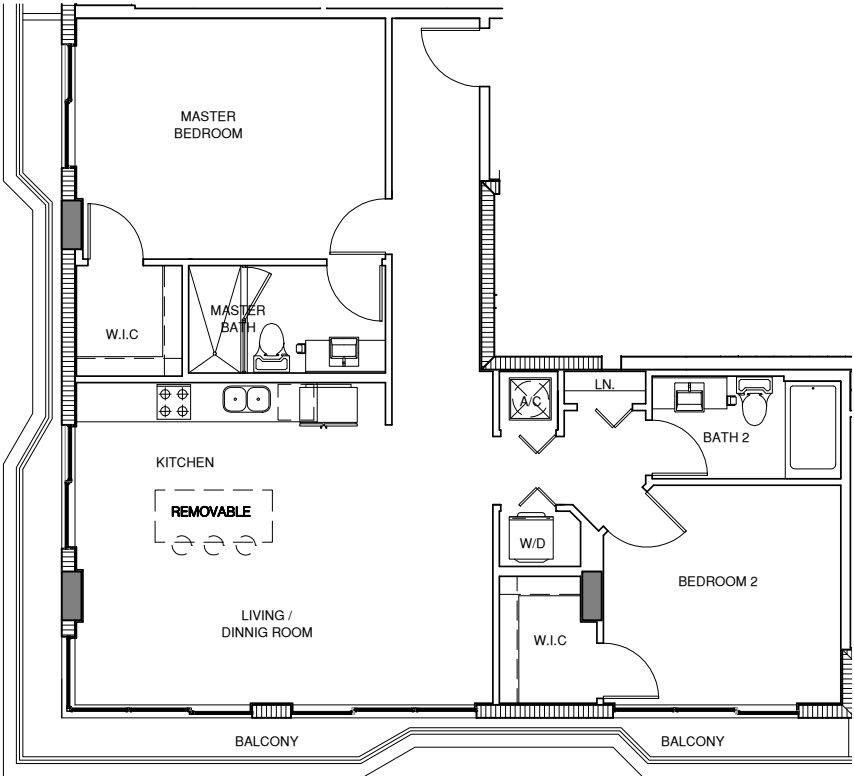
Unit A

5th & LPH Floor

2 Bed / 2 Bath

Living Area: 1,123 Sq. Ft.

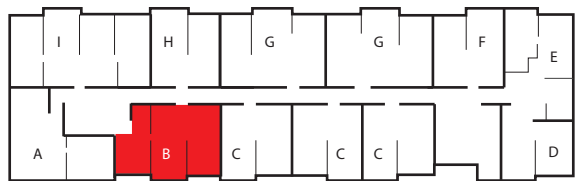
Balcony Area: 201 Sq. Ft.



ModernLiving

Stated dimensions are measured to the exterior boundaries of the exterior walls and the centerline of interior demising walls and in fact vary from the dimensions that would be determined by using the description and definition of the "Unit" set forth in the Declaration (which generally only includes the interior airspace between the perimeter walls and excludes interior structural components). For your reference, the area of the Unit, determined in accordance with those defined unit boundaries, is 1,038 sq. ft.. Note that measurements of rooms set forth on this floor plan are generally taken at the greatest points of each given room (as if the room were a perfect rectangle), without regard for any cutouts. Accordingly, the area of the actual room will typically be smaller than the product obtained by multiplying the stated length times width. All dimensions and ceiling heights are approximate and may vary with actual construction, and all floor plans and development plans are subject to change.

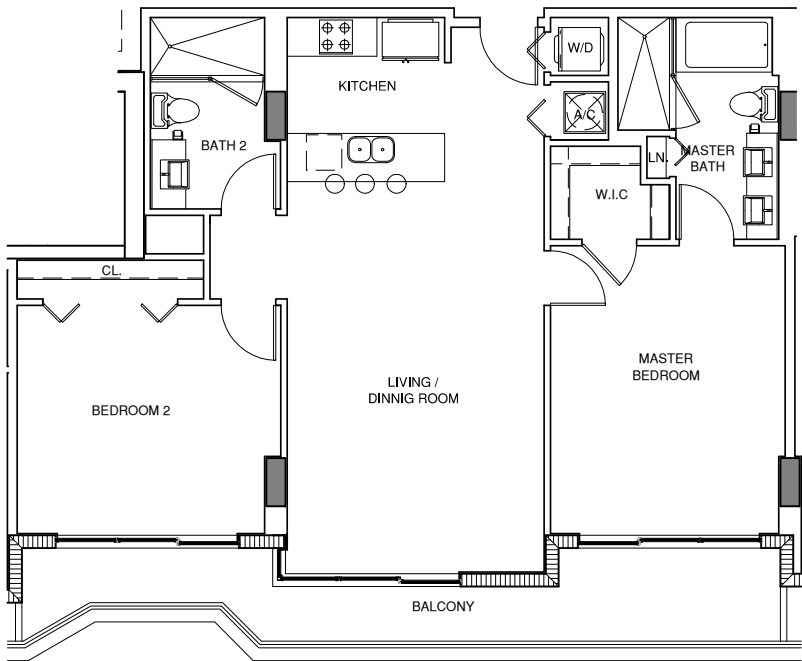
cassa brickell



Unit B

3rd & 6th Floor
2 Bed / 2 Bath

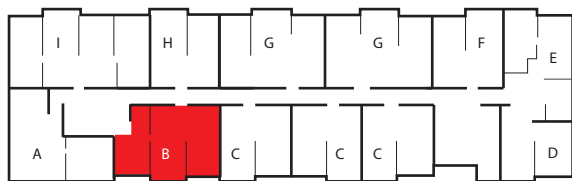
Living Area: 1,077 Sq. Ft.
Balcony Area: 183 Sq. Ft.



ModernLiving

Stated dimensions are measured to the exterior boundaries of the exterior walls and the centerline of interior demising walls and in fact vary from the dimensions that would be determined by using the description and definition of the "Unit" set forth in the Declaration (which generally only includes the interior airspace between the perimeter walls and excludes interior structural components). For your reference, the area of the Unit, determined in accordance with those defined unit boundaries, is 980 sq. ft.. Note that measurements of rooms set forth on this floor plan are generally taken at the greatest points of each given room (as if the room were a perfect rectangle), without regard for any cutouts. Accordingly, the area of the actual room will typically be smaller than the product obtained by multiplying the stated length times width. All dimensions and ceiling heights are approximate and may vary with actual construction, and all floor plans and development plans are subject to change.

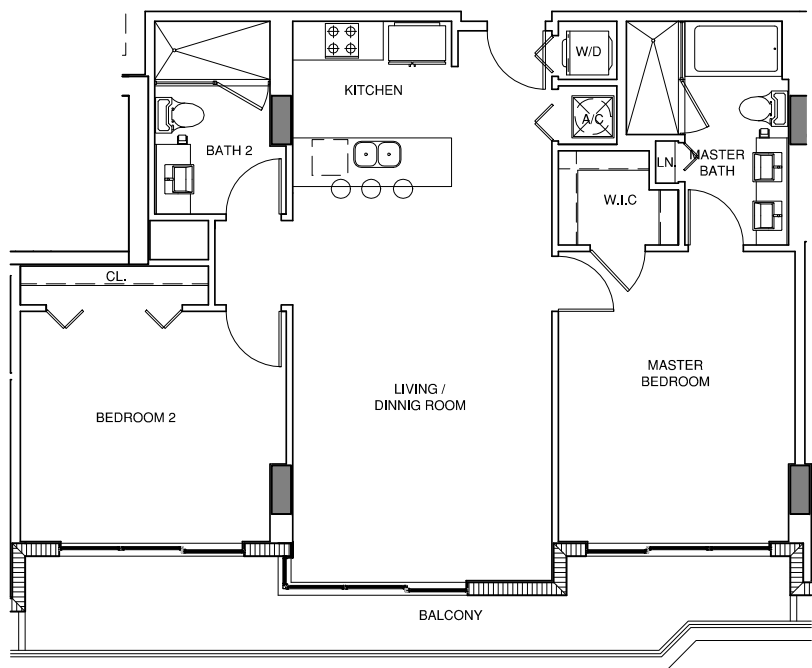
cassa brickell



Unit B

4th & 7th Floor
2 Bed / 2 Bath

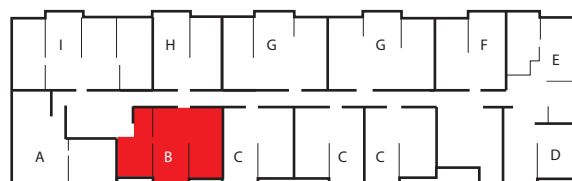
Living Area: 1,077 Sq. Ft.
Balcony Area: 192 Sq. Ft.



ModernLiving

Stated dimensions are measured to the exterior boundaries of the exterior walls and the centerline of interior demising walls and in fact vary from the dimensions that would be determined by using the description and definition of the "Unit" set forth in the Declaration (which generally only includes the interior airspace between the perimeter walls and excludes interior structural components). For your reference, the area of the Unit, determined in accordance with those defined unit boundaries, is 980 sq. ft.. Note that measurements of rooms set forth on this floor plan are generally taken at the greatest points of each given room (as if the room were a perfect rectangle), without regard for any cutouts. Accordingly, the area of the actual room will typically be smaller than the product obtained by multiplying the stated length times width. All dimensions and ceiling heights are approximate and may vary with actual construction, and all floor plans and development plans are subject to change.

cassa brickell

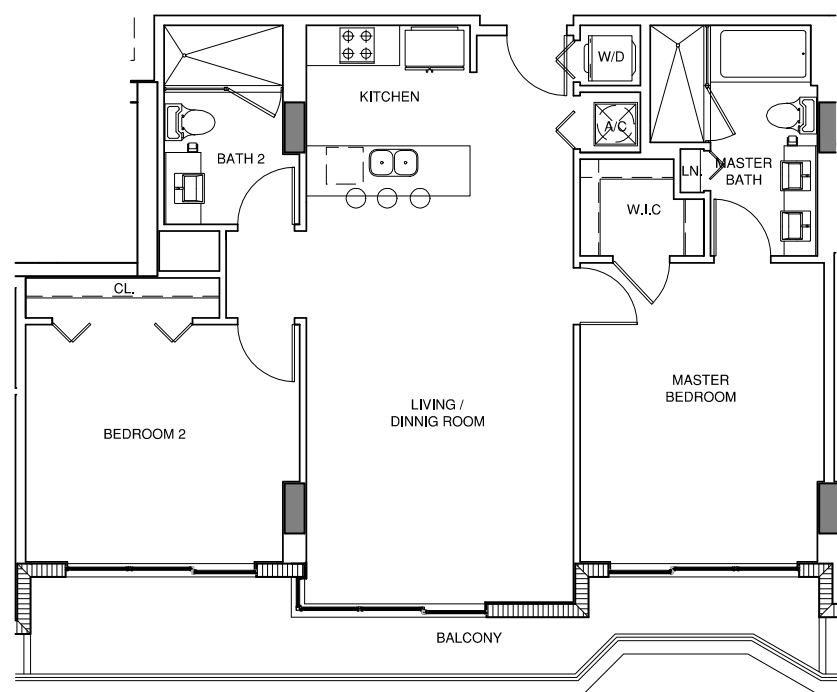


Unit B

5th & LPH Floor
2 Bed / 2 Bath

Living Area: 1,077 Sq. Ft.

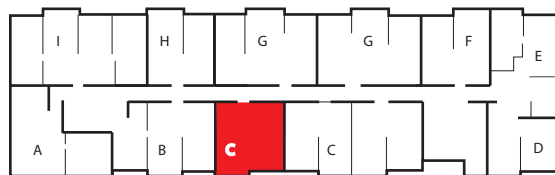
Balcony Area: 183 Sq. Ft.



ModernLiving

Stated dimensions are measured to the exterior boundaries of the exterior walls and the centerline of interior demising walls and in fact vary from the dimensions that would be determined by using the description and definition of the "Unit" set forth in the Declaration (which generally only includes the interior airspace between the perimeter walls and excludes interior structural components). For your reference, the area of the Unit, determined in accordance with those defined unit boundaries, is 980 sq. ft.. Note that measurements of rooms set forth on this floor plan are generally taken at the greatest points of each given room (as if the room were a perfect rectangle), without regard for any cutouts. Accordingly, the area of the actual room will typically be smaller than the product obtained by multiplying the stated length times width. All dimensions and ceiling heights are approximate and may vary with actual construction, and all floor plans and development plans are subject to change.

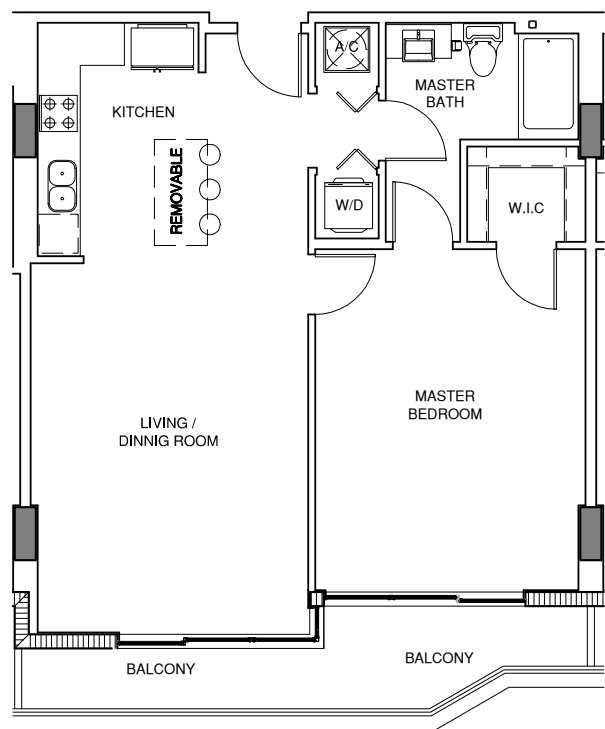
cassa brickell



Unit C

3rd & 6th Floor
1 Bed / 1 Bath

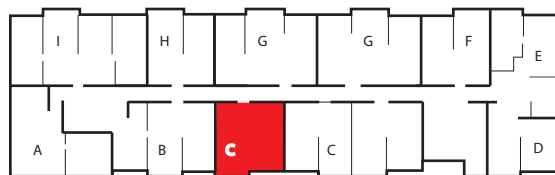
Living Area: 774 Sq. Ft.
Balcony Area: 117 Sq. Ft.



ModernLiving

Stated dimensions are measured to the exterior boundaries of the exterior walls and the centerline of interior demising walls and in fact vary from the dimensions that would be determined by using the description and definition of the "Unit" set forth in the Declaration (which generally only includes the interior airspace between the perimeter walls and excludes interior structural components). For your reference, the area of the Unit, determined in accordance with those defined unit boundaries, is 714 sq. ft.. Note that measurements of rooms set forth on this floor plan are generally taken at the greatest points of each given room (as if the room were a perfect rectangle), without regard for any cutouts. Accordingly, the area of the actual room will typically be smaller than the product obtained by multiplying the stated length times width. All dimensions and ceiling heights are approximate and may vary with actual construction, and all floor plans and development plans are subject to change.

cassa brickell



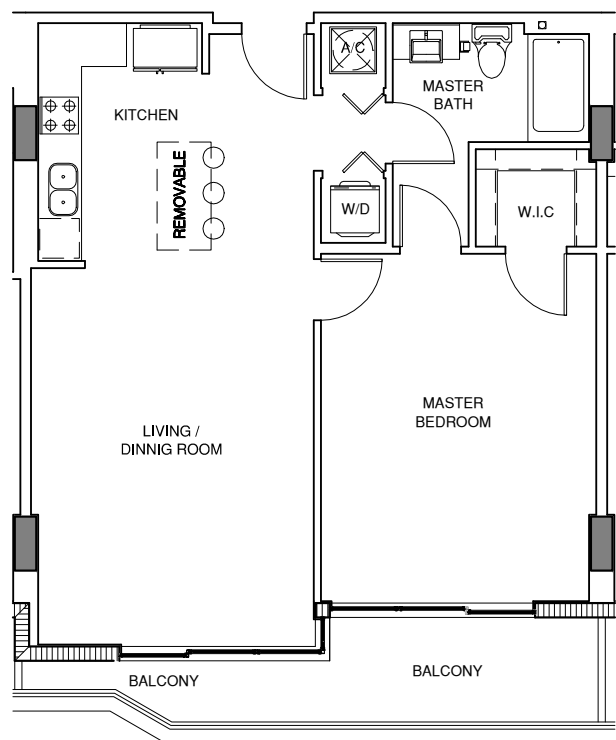
Unit C

4th & 7th Floor

1 Bed / 1 Bath

Living Area: 774 Sq. Ft.

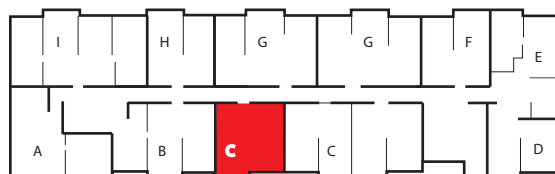
Balcony Area: 120 Sq. Ft.



ModernLiving

Stated dimensions are measured to the exterior boundaries of the exterior walls and the centerline of interior demising walls and in fact vary from the dimensions that would be determined by using the description and definition of the "Unit" set forth in the Declaration (which generally only includes the interior airspace between the perimeter walls and excludes interior structural components). For your reference, the area of the Unit, determined in accordance with those defined unit boundaries, is 714 sq. ft.. Note that measurements of rooms set forth on this floor plan are generally taken at the greatest points of each given room (as if the room were a perfect rectangle), without regard for any cutouts. Accordingly, the area of the actual room will typically be smaller than the product obtained by multiplying the stated length times width. All dimensions and ceiling heights are approximate and may vary with actual construction, and all floor plans and development plans are subject to change.

cassa brickell



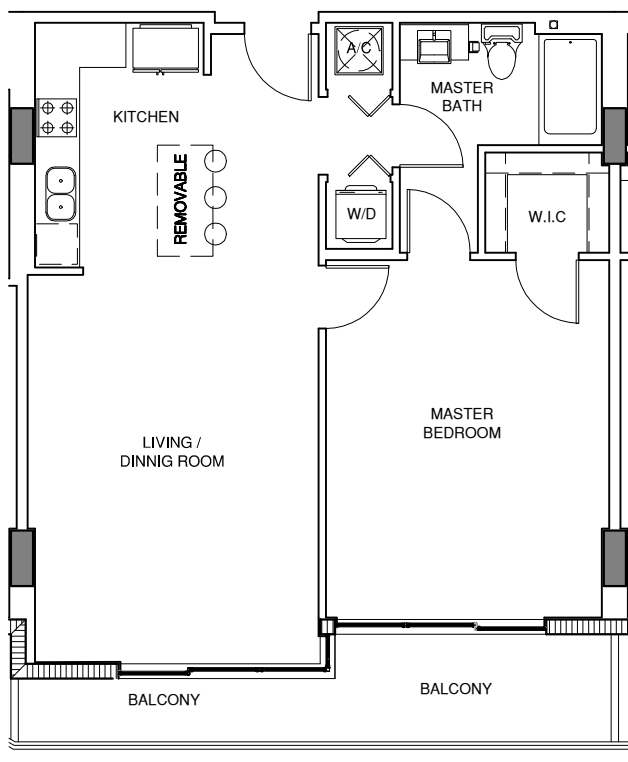
Unit C

5th & LPH Floor

1 Bed / 1 Bath

Living Area: 774 Sq. Ft.

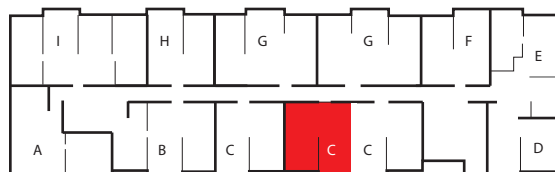
Balcony Area: 129 Sq. Ft.



ModernLiving

Stated dimensions are measured to the exterior boundaries of the exterior walls and the centerline of interior demising walls and in fact vary from the dimensions that would be determined by using the description and definition of the "Unit" set forth in the Declaration (which generally only includes the interior airspace between the perimeter walls and excludes interior structural components). For your reference, the area of the Unit, determined in accordance with those defined unit boundaries, is 714 sq. ft.. Note that measurements of rooms set forth on this floor plan are generally taken at the greatest points of each given room (as if the room were a perfect rectangle), without regard for any cutouts. Accordingly, the area of the actual room will typically be smaller than the product obtained by multiplying the stated length times width. All dimensions and ceiling heights are approximate and may vary with actual construction, and all floor plans and development plans are subject to change.

cassa brickell



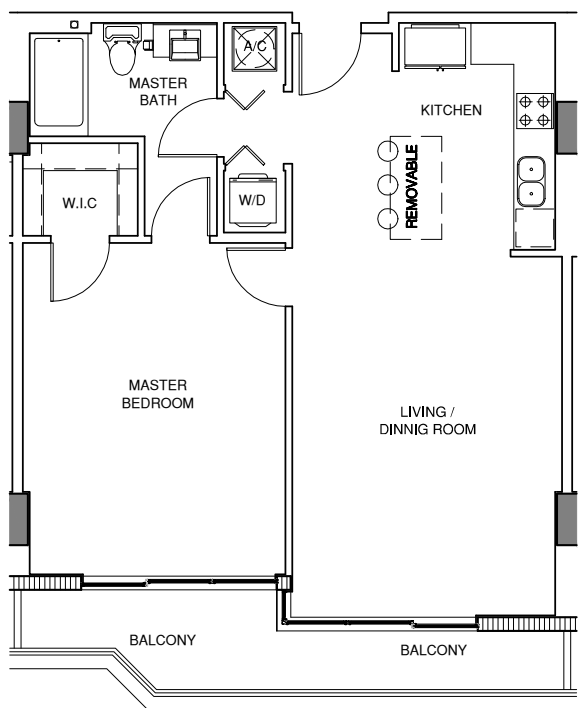
Unit C-R

3rd & 6th Floor

1 Bed / 1 Bath

Living Area: 774 Sq. Ft.

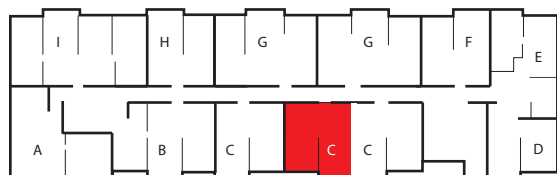
Balcony Area: 117 Sq. Ft.



ModernLiving

Stated dimensions are measured to the exterior boundaries of the exterior walls and the centerline of interior demising walls and in fact vary from the dimensions that would be determined by using the description and definition of the "Unit" set forth in the Declaration (which generally only includes the interior airspace between the perimeter walls and excludes interior structural components). For your reference, the area of the Unit, determined in accordance with those defined unit boundaries, is 714 sq. ft.. Note that measurements of rooms set forth on this floor plan are generally taken at the greatest points of each given room (as if the room were a perfect rectangle), without regard for any cutouts. Accordingly, the area of the actual room will typically be smaller than the product obtained by multiplying the stated length times width. All dimensions and ceiling heights are approximate and may vary with actual construction, and all floor plans and development plans are subject to change.

cassa brickell



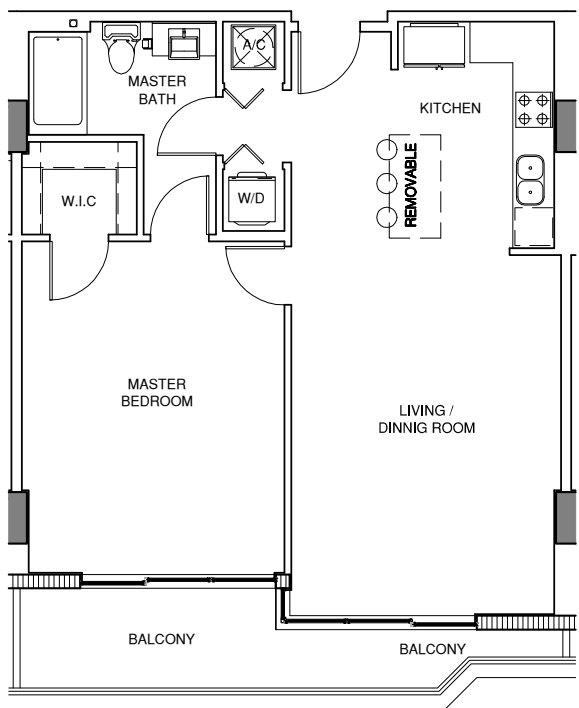
Unit C-R

4th & 7th Floor

1 Bed / 1 Bath

Living Area: 774 Sq. Ft.

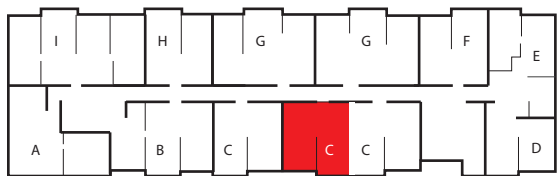
Balcony Area: 120 Sq. Ft.



ModernLiving

Stated dimensions are measured to the exterior boundaries of the exterior walls and the centerline of interior demising walls and in fact vary from the dimensions that would be determined by using the description and definition of the "Unit" set forth in the Declaration (which generally only includes the interior airspace between the perimeter walls and excludes interior structural components). For your reference, the area of the Unit, determined in accordance with those defined unit boundaries, is 714 sq. ft.. Note that measurements of rooms set forth on this floor plan are generally taken at the greatest points of each given room (as if the room were a perfect rectangle), without regard for any cutouts. Accordingly, the area of the actual room will typically be smaller than the product obtained by multiplying the stated length times width. All dimensions and ceiling heights are approximate and may vary with actual construction, and all floor plans and development plans are subject to change.

cassa brickell



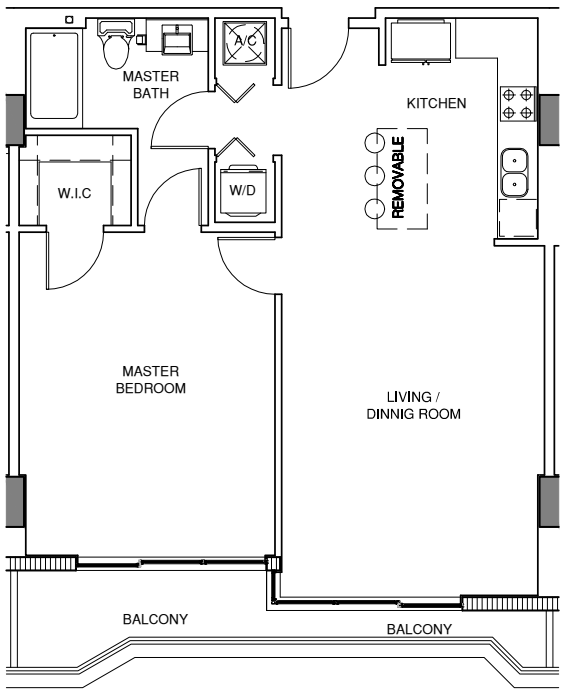
Unit C-R

5th & LPH Floor

1 Bed / 1 Bath

Living Area: 774 Sq. Ft.

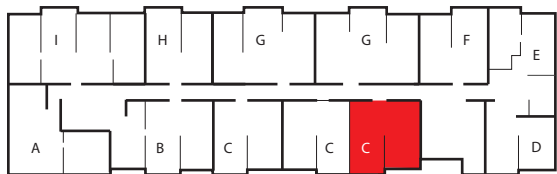
Balcony Area: 98 Sq. Ft.



ModernLiving

Stated dimensions are measured to the exterior boundaries of the exterior walls and the centerline of interior demising walls and in fact vary from the dimensions that would be determined by using the description and definition of the "Unit" set forth in the Declaration (which generally only includes the interior airspace between the perimeter walls and excludes interior structural components). For your reference, the area of the Unit, determined in accordance with those defined unit boundaries, is 714 sq. ft.. Note that measurements of rooms set forth on this floor plan are generally taken at the greatest points of each given room (as if the room were a perfect rectangle), without regard for any cutouts. Accordingly, the area of the actual room will typically be smaller than the product obtained by multiplying the stated length times width. All dimensions and ceiling heights are approximate and may vary with actual construction, and all floor plans and development plans are subject to change.

cassa brickell



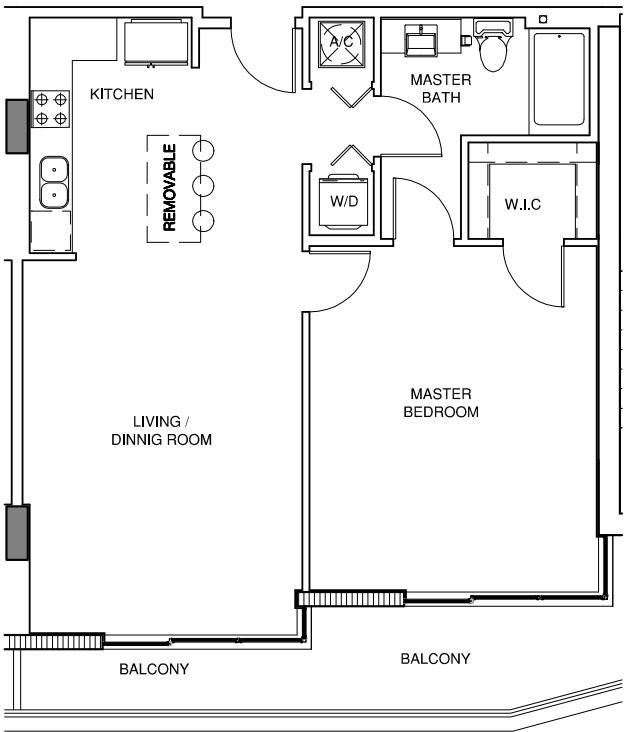
Unit C1

3rd & 6th Floor

1 Bed / 1 Bath

Living Area: 800 Sq. Ft.

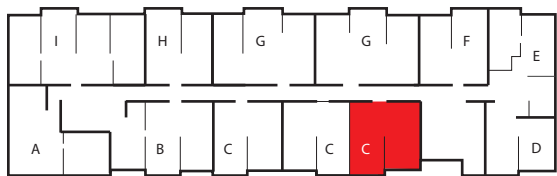
Balcony Area: 261 Sq. Ft.



ModernLiving

Stated dimensions are measured to the exterior boundaries of the exterior walls and the centerline of interior demising walls and in fact vary from the dimensions that would be determined by using the description and definition of the "Unit" set forth in the Declaration (which generally only includes the interior airspace between the perimeter walls and excludes interior structural components). For your reference, the area of the Unit, determined in accordance with those defined unit boundaries, is 735 sq. ft.. Note that measurements of rooms set forth on this floor plan are generally taken at the greatest points of each given room (as if the room were a perfect rectangle), without regard for any cutouts. Accordingly, the area of the actual room will typically be smaller than the product obtained by multiplying the stated length times width. All dimensions and ceiling heights are approximate and may vary with actual construction, and all floor plans and development plans are subject to change.

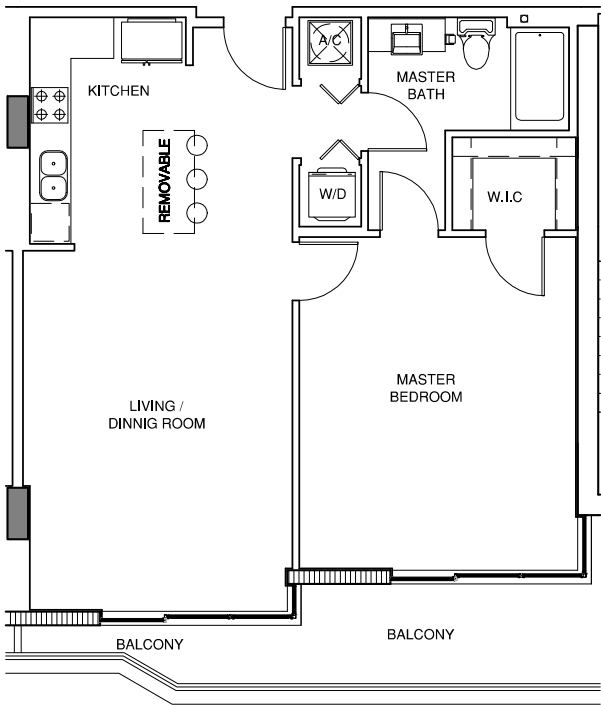
cassa brickell



Unit C1

4th & 7th Floor
1 Bed / 1 Bath

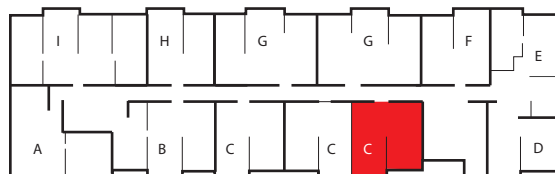
Living Area: 800 Sq. Ft.
Balcony Area: 274 Sq. Ft.



ModernLiving

Stated dimensions are measured to the exterior boundaries of the exterior walls and the centerline of interior demising walls and in fact vary from the dimensions that would be determined by using the description and definition of the "Unit" set forth in the Declaration (which generally only includes the interior airspace between the perimeter walls and excludes interior structural components). For your reference, the area of the Unit, determined in accordance with those defined unit boundaries, is 735 sq. ft.. Note that measurements of rooms set forth on this floor plan are generally taken at the greatest points of each given room (as if the room were a perfect rectangle), without regard for any cutouts. Accordingly, the area of the actual room will typically be smaller than the product obtained by multiplying the stated length times width. All dimensions and ceiling heights are approximate and may vary with actual construction, and all floor plans and development plans are subject to change.

cassa brickell



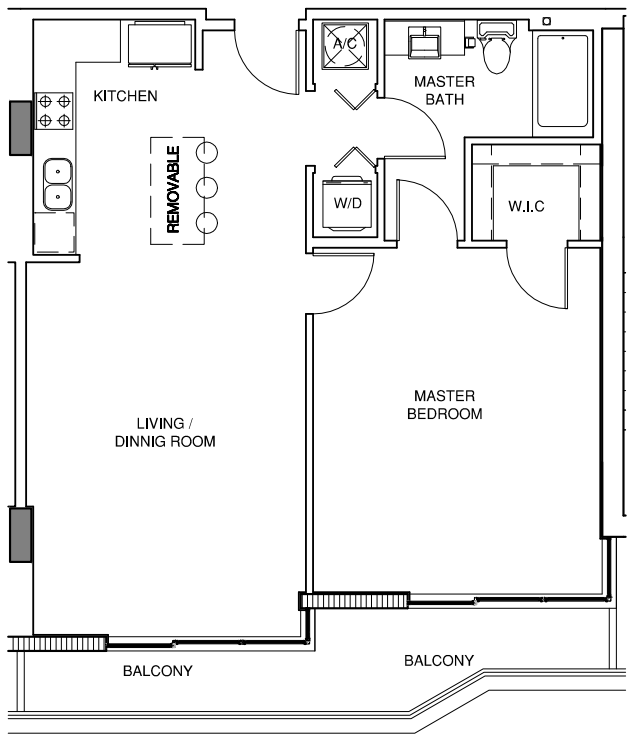
Unit C1

5th & LPH Floor

1 Bed / 1 Bath

Living Area: 800 Sq. Ft.

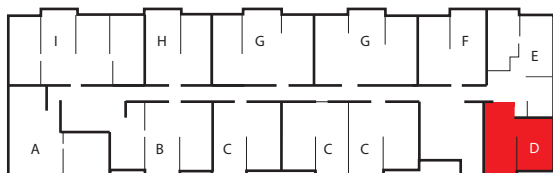
Balcony Area: 364 Sq. Ft.



ModernLiving

Stated dimensions are measured to the exterior boundaries of the exterior walls and the centerline of interior demising walls and in fact vary from the dimensions that would be determined by using the description and definition of the "Unit" set forth in the Declaration (which generally only includes the interior airspace between the perimeter walls and excludes interior structural components). For your reference, the area of the Unit, determined in accordance with those defined unit boundaries, is 735 sq. ft.. Note that measurements of rooms set forth on this floor plan are generally taken at the greatest points of each given room (as if the room were a perfect rectangle), without regard for any cutouts. Accordingly, the area of the actual room will typically be smaller than the product obtained by multiplying the stated length times width. All dimensions and ceiling heights are approximate and may vary with actual construction, and all floor plans and development plans are subject to change.

cassa brickell



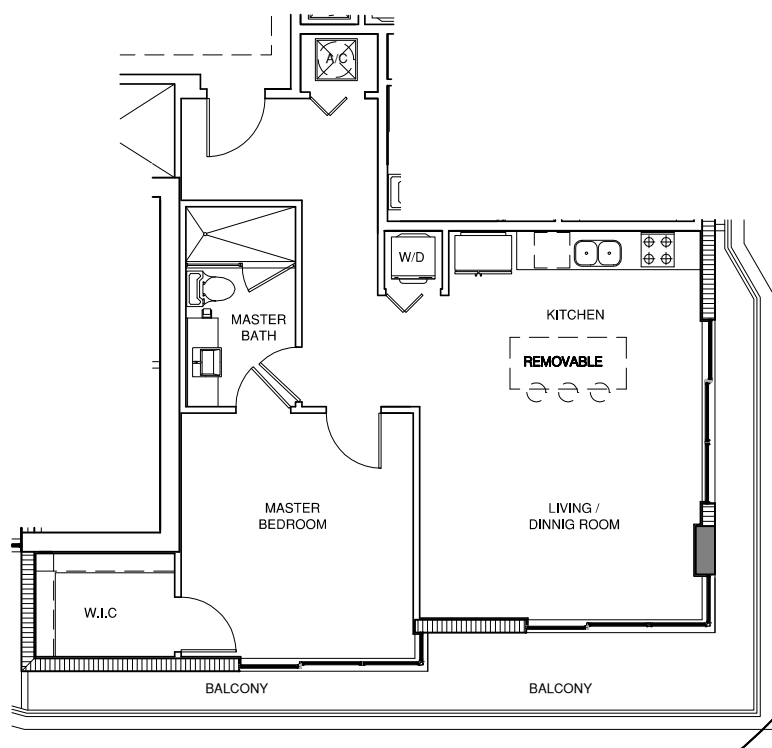
Unit D

3rd Floor

1 Bed / 1 Bath

Living Area: 760 Sq. Ft.

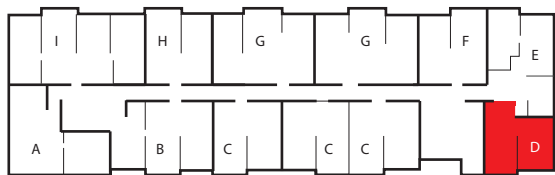
Balcony Area: 211 Sq. Ft.



ModernLiving

Stated dimensions are measured to the exterior boundaries of the exterior walls and the centerline of interior demising walls and in fact vary from the dimensions that would be determined by using the description and definition of the "Unit" set forth in the Declaration (which generally only includes the interior airspace between the perimeter walls and excludes interior structural components). For your reference, the area of the Unit, determined in accordance with those defined unit boundaries, is 682 sq. ft.. Note that measurements of rooms set forth on this floor plan are generally taken at the greatest points of each given room (as if the room were a perfect rectangle), without regard for any cutouts. Accordingly, the area of the actual room will typically be smaller than the product obtained by multiplying the stated length times width. All dimensions and ceiling heights are approximate and may vary with actual construction, and all floor plans and development plans are subject to change.

cassa brickell



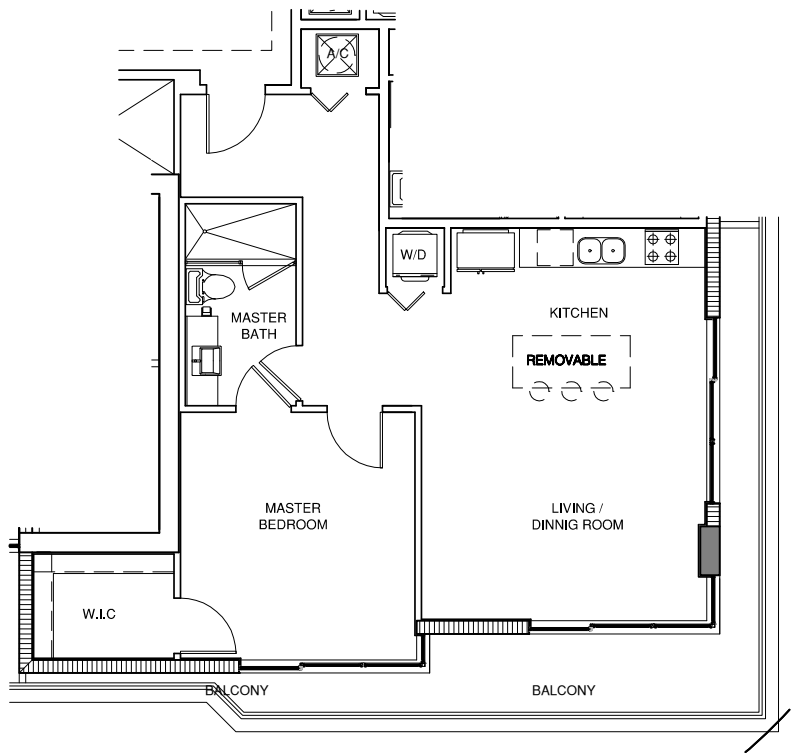
Unit D

4th & 7th Floor

1 Bed / 1 Bath

Living Area: 760 Sq. Ft.

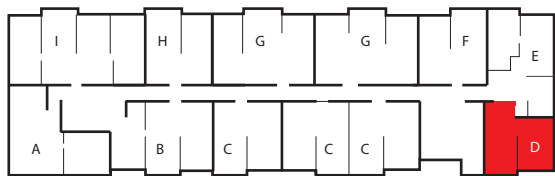
Balcony Area: 199 Sq. Ft.



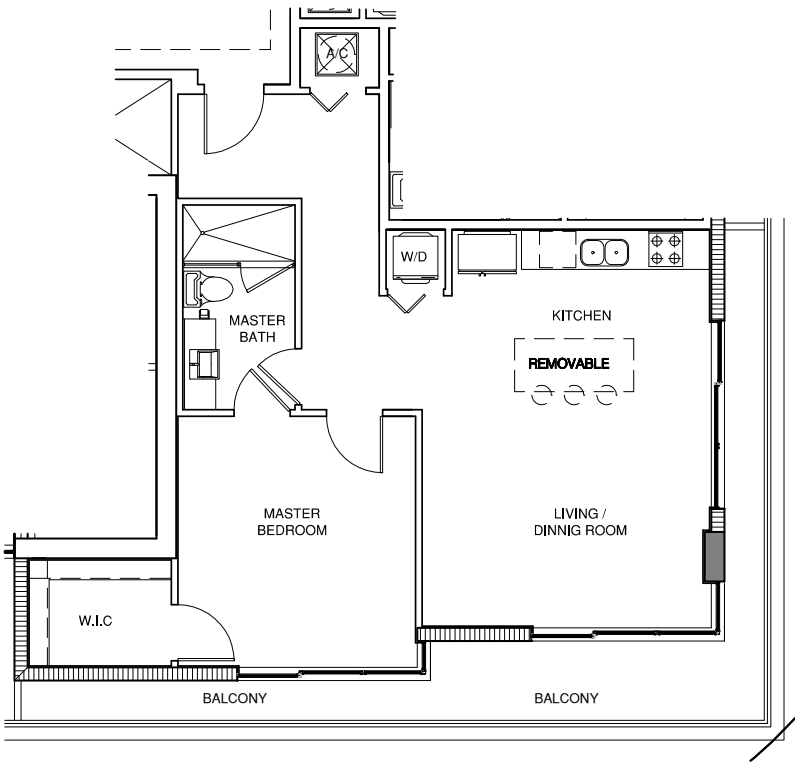
ModernLiving

Stated dimensions are measured to the exterior boundaries of the exterior walls and the centerline of interior demising walls and in fact vary from the dimensions that would be determined by using the description and definition of the "Unit" set forth in the Declaration (which generally only includes the interior airspace between the perimeter walls and excludes interior structural components). For your reference, the area of the Unit, determined in accordance with those defined unit boundaries, is 682 sq. ft.. Note that measurements of rooms set forth on this floor plan are generally taken at the greatest points of each given room (as if the room were a perfect rectangle), without regard for any cutouts. Accordingly, the area of the actual room will typically be smaller than the product obtained by multiplying the stated length times width. All dimensions and ceiling heights are approximate and may vary with actual construction, and all floor plans and development plans are subject to change.

cassa brickell



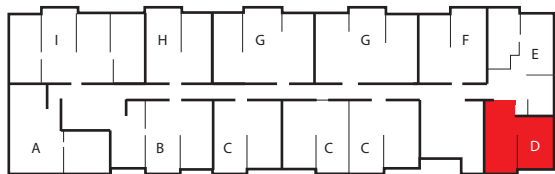
Unit D
5th & LPH Floor
1 Bed / 1 Bath
Living Area: 760 Sq. Ft.
Balcony Area: 214 Sq. Ft.



ModernLiving

Stated dimensions are measured to the exterior boundaries of the exterior walls and the centerline of interior demising walls and in fact vary from the dimensions that would be determined by using the description and definition of the "Unit" set forth in the Declaration (which generally only includes the interior airspace between the perimeter walls and excludes interior structural components). For your reference, the area of the Unit, determined in accordance with those defined unit boundaries, is 682 sq. ft.. Note that measurements of rooms set forth on this floor plan are generally taken at the greatest points of each given room (as if the room were a perfect rectangle), without regard for any cutouts. Accordingly, the area of the actual room will typically be smaller than the product obtained by multiplying the stated length times width. All dimensions and ceiling heights are approximate and may vary with actual construction, and all floor plans and development plans are subject to change.

cassa brickell



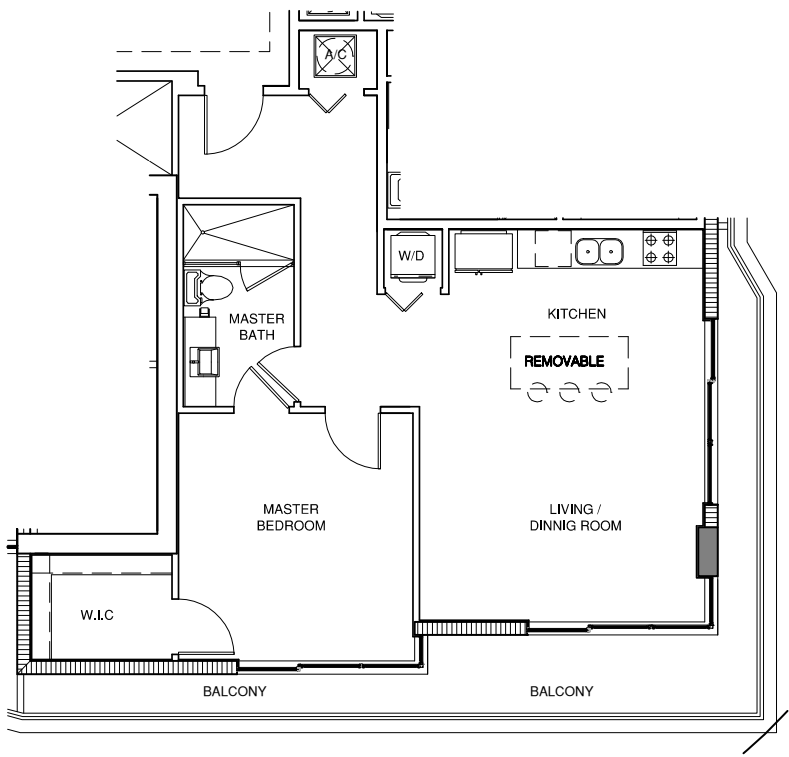
Unit D

6th Floor

1 Bed / 1 Bath

Living Area: 760 Sq. Ft.

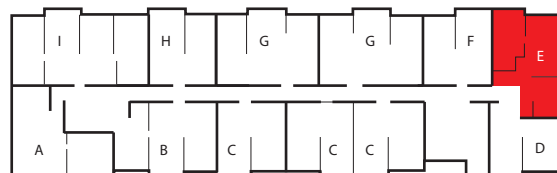
Balcony Area: 211 Sq. Ft.



ModernLiving

Stated dimensions are measured to the exterior boundaries of the exterior walls and the centerline of interior demising walls and in fact vary from the dimensions that would be determined by using the description and definition of the "Unit" set forth in the Declaration (which generally only includes the interior airspace between the perimeter walls and excludes interior structural components). For your reference, the area of the Unit, determined in accordance with those defined unit boundaries, is 682 sq. ft.. Note that measurements of rooms set forth on this floor plan are generally taken at the greatest points of each given room (as if the room were a perfect rectangle), without regard for any cutouts. Accordingly, the area of the actual room will typically be smaller than the product obtained by multiplying the stated length times width. All dimensions and ceiling heights are approximate and may vary with actual construction, and all floor plans and development plans are subject to change.

cassa brickell



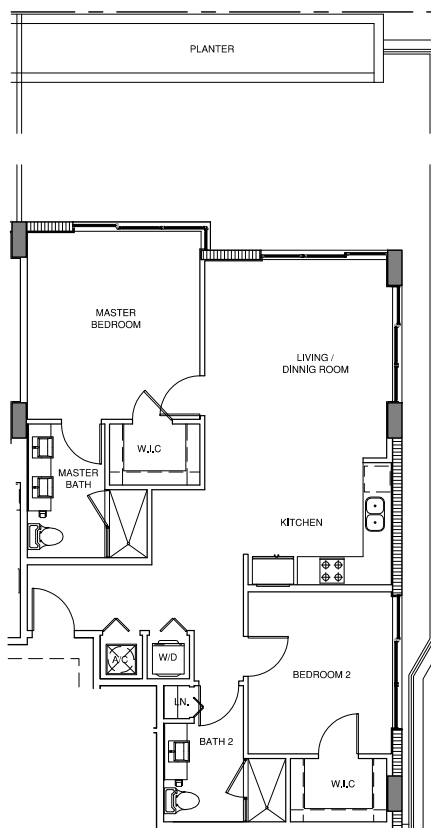
Unit E

3rd Floor

2 Bed / 2 Bath

Living Area: 1,009 Sq. Ft.

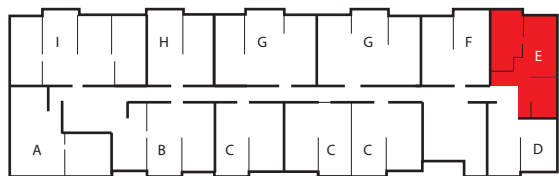
Balcony Area: 854 Sq. Ft.



ModernLiving

Stated dimensions are measured to the exterior boundaries of the exterior walls and the centerline of interior demising walls and in fact vary from the dimensions that would be determined by using the description and definition of the "Unit" set forth in the Declaration (which generally only includes the interior airspace between the perimeter walls and excludes interior structural components). For your reference, the area of the Unit, determined in accordance with those defined unit boundaries, is 938 sq. ft.. Note that measurements of rooms set forth on this floor plan are generally taken at the greatest points of each given room (as if the room were a perfect rectangle), without regard for any cutouts. Accordingly, the area of the actual room will typically be smaller than the product obtained by multiplying the stated length times width. All dimensions and ceiling heights are approximate and may vary with actual construction, and all floor plans and development plans are subject to change.

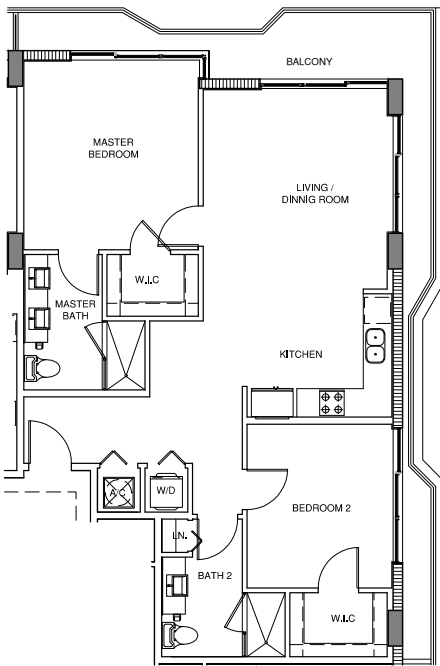
cassa brickell



Unit E

4th & 7th Floor
2 Bed / 2 Bath

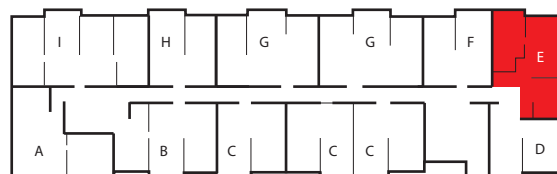
Living Area: 1,009 Sq. Ft.
Balcony Area: 214 Sq. Ft.



ModernLiving

Stated dimensions are measured to the exterior boundaries of the exterior walls and the centerline of interior demising walls and in fact vary from the dimensions that would be determined by using the description and definition of the "Unit" set forth in the Declaration (which generally only includes the interior airspace between the perimeter walls and excludes interior structural components). For your reference, the area of the Unit, determined in accordance with those defined unit boundaries, is 938 sq. ft.. Note that measurements of rooms set forth on this floor plan are generally taken at the greatest points of each given room (as if the room were a perfect rectangle), without regard for any cutouts. Accordingly, the area of the actual room will typically be smaller than the product obtained by multiplying the stated length times width. All dimensions and ceiling heights are approximate and may vary with actual construction, and all floor plans and development plans are subject to change.

cassa brickell



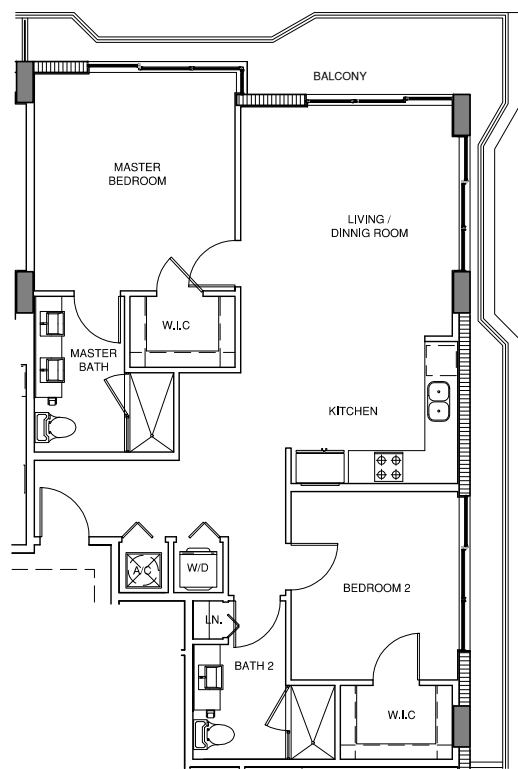
Unit E

5th & LPH Floor

2 Bed / 2 Bath

Living Area: 1,009 Sq. Ft.

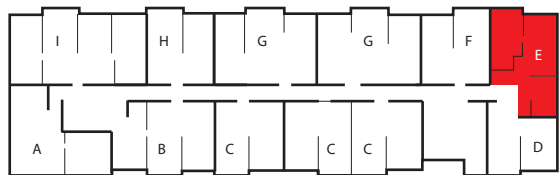
Balcony Area: 209 Sq. Ft.



ModernLiving

Stated dimensions are measured to the exterior boundaries of the exterior walls and the centerline of interior demising walls and in fact vary from the dimensions that would be determined by using the description and definition of the "Unit" set forth in the Declaration (which generally only includes the interior airspace between the perimeter walls and excludes interior structural components). For your reference, the area of the Unit, determined in accordance with those defined unit boundaries, is 938 sq. ft.. Note that measurements of rooms set forth on this floor plan are generally taken at the greatest points of each given room (as if the room were a perfect rectangle), without regard for any cutouts. Accordingly, the area of the actual room will typically be smaller than the product obtained by multiplying the stated length times width. All dimensions and ceiling heights are approximate and may vary with actual construction, and all floor plans and development plans are subject to change.

cassa brickell



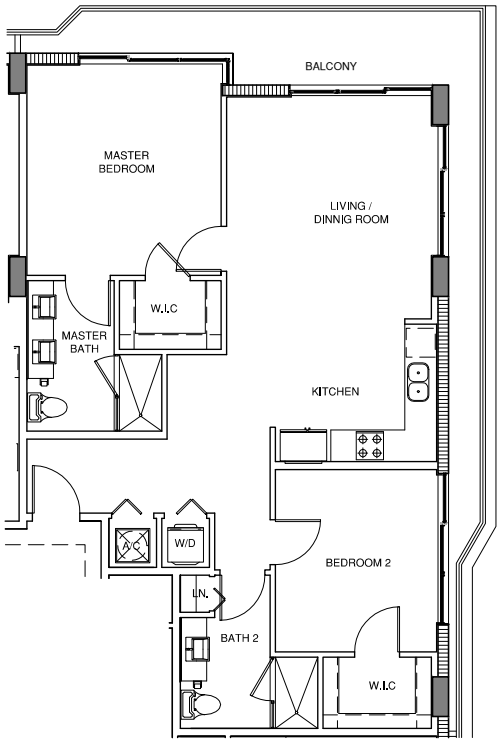
Unit E

6th Floor

2 Bed / 2 Bath

Living Area: 1,009 Sq. Ft.

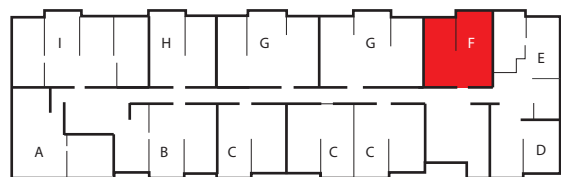
Balcony Area: 224 Sq. Ft.



ModernLiving

Stated dimensions are measured to the exterior boundaries of the exterior walls and the centerline of interior demising walls and in fact vary from the dimensions that would be determined by using the description and definition of the "Unit" set forth in the Declaration (which generally only includes the interior airspace between the perimeter walls and excludes interior structural components). For your reference, the area of the Unit, determined in accordance with those defined unit boundaries, is 938 sq. ft.. Note that measurements of rooms set forth on this floor plan are generally taken at the greatest points of each given room (as if the room were a perfect rectangle), without regard for any cutouts. Accordingly, the area of the actual room will typically be smaller than the product obtained by multiplying the stated length times width. All dimensions and ceiling heights are approximate and may vary with actual construction, and all floor plans and development plans are subject to change.

cassa brickell



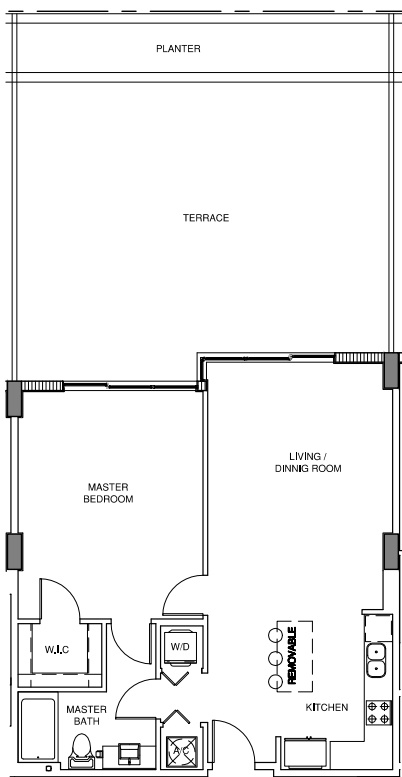
Unit F

3rd Floor

1 Bed / 1 Bath

Living Area: 781 Sq. Ft.

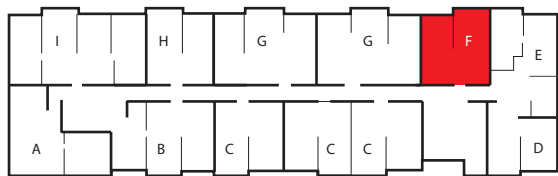
Balcony Area: 665 Sq. Ft.



ModernLiving

Stated dimensions are measured to the exterior boundaries of the exterior walls and the centerline of interior demising walls and in fact vary from the dimensions that would be determined by using the description and definition of the "Unit" set forth in the Declaration (which generally only includes the interior airspace between the perimeter walls and excludes interior structural components). For your reference, the area of the Unit, determined in accordance with those defined unit boundaries, is 725 sq. ft.. Note that measurements of rooms set forth on this floor plan are generally taken at the greatest points of each given room (as if the room were a perfect rectangle), without regard for any cutouts. Accordingly, the area of the actual room will typically be smaller than the product obtained by multiplying the stated length times width. All dimensions and ceiling heights are approximate and may vary with actual construction, and all floor plans and development plans are subject to change.

cassa brickell



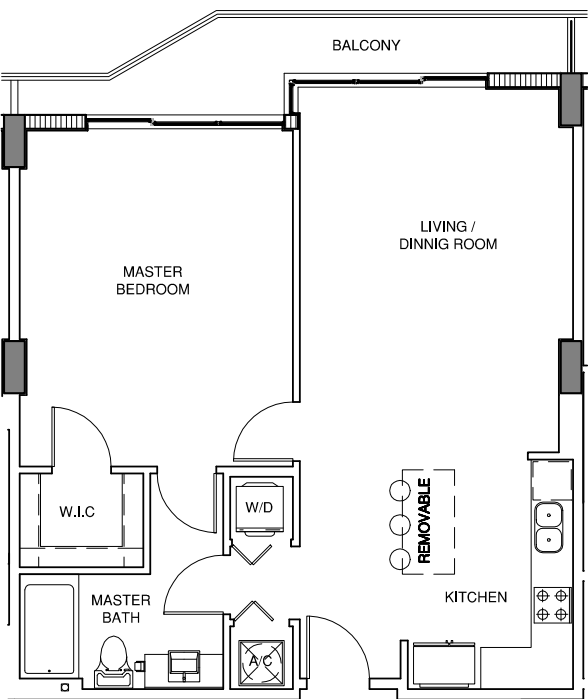
Unit F

4th & 7th Floor

1 Bed / 1 Bath

Living Area: 781 Sq. Ft.

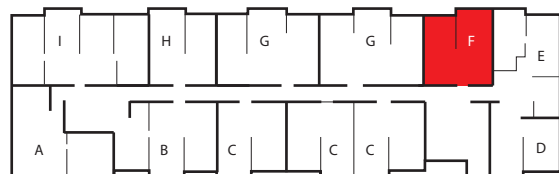
Balcony Area: 84 Sq. Ft.



ModernLiving

Stated dimensions are measured to the exterior boundaries of the exterior walls and the centerline of interior demising walls and in fact vary from the dimensions that would be determined by using the description and definition of the "Unit" set forth in the Declaration (which generally only includes the interior airspace between the perimeter walls and excludes interior structural components). For your reference, the area of the Unit, determined in accordance with those defined unit boundaries, is 725 sq. ft.. Note that measurements of rooms set forth on this floor plan are generally taken at the greatest points of each given room (as if the room were a perfect rectangle), without regard for any cutouts. Accordingly, the area of the actual room will typically be smaller than the product obtained by multiplying the stated length times width. All dimensions and ceiling heights are approximate and may vary with actual construction, and all floor plans and development plans are subject to change.

cassa brickell



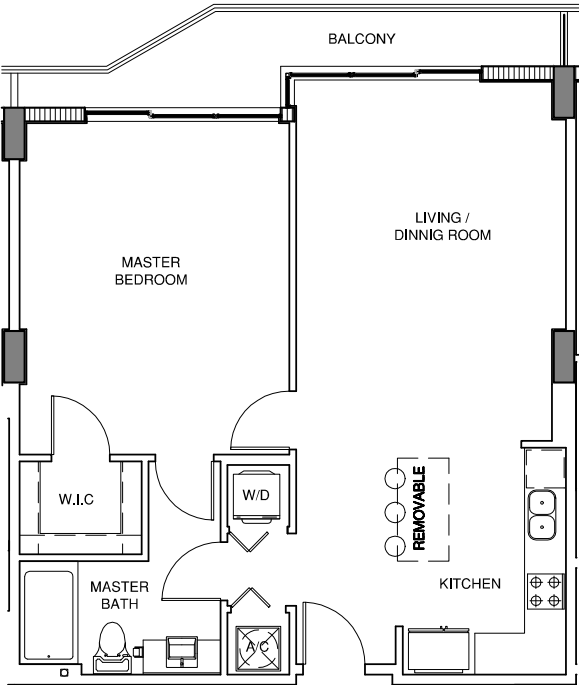
Unit F

5th & LPH Floor

1 Bed / 1 Bath

Living Area: 781 Sq. Ft.

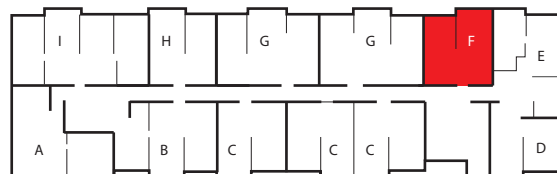
Balcony Area: 84 Sq. Ft.



ModernLiving

Stated dimensions are measured to the exterior boundaries of the exterior walls and the centerline of interior demising walls and in fact vary from the dimensions that would be determined by using the description and definition of the "Unit" set forth in the Declaration (which generally only includes the interior airspace between the perimeter walls and excludes interior structural components). For your reference, the area of the Unit, determined in accordance with those defined unit boundaries, is 725 sq. ft.. Note that measurements of rooms set forth on this floor plan are generally taken at the greatest points of each given room (as if the room were a perfect rectangle), without regard for any cutouts. Accordingly, the area of the actual room will typically be smaller than the product obtained by multiplying the stated length times width. All dimensions and ceiling heights are approximate and may vary with actual construction, and all floor plans and development plans are subject to change.

cassa brickell



Unit F

6th Floor

1 Bed / 1 Bath

Living Area: 781 Sq. Ft.

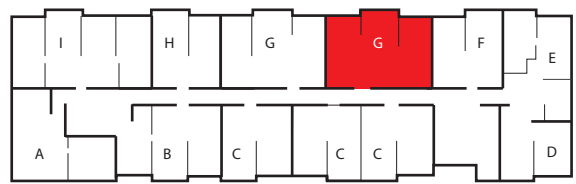
Balcony Area: 84 Sq. Ft.



ModernLiving

Stated dimensions are measured to the exterior boundaries of the exterior walls and the centerline of interior demising walls and in fact vary from the dimensions that would be determined by using the description and definition of the "Unit" set forth in the Declaration (which generally only includes the interior airspace between the perimeter walls and excludes interior structural components). For your reference, the area of the Unit, determined in accordance with those defined unit boundaries, is 725 sq. ft.. Note that measurements of rooms set forth on this floor plan are generally taken at the greatest points of each given room (as if the room were a perfect rectangle), without regard for any cutouts. Accordingly, the area of the actual room will typically be smaller than the product obtained by multiplying the stated length times width. All dimensions and ceiling heights are approximate and may vary with actual construction, and all floor plans and development plans are subject to change.

cassa brickell



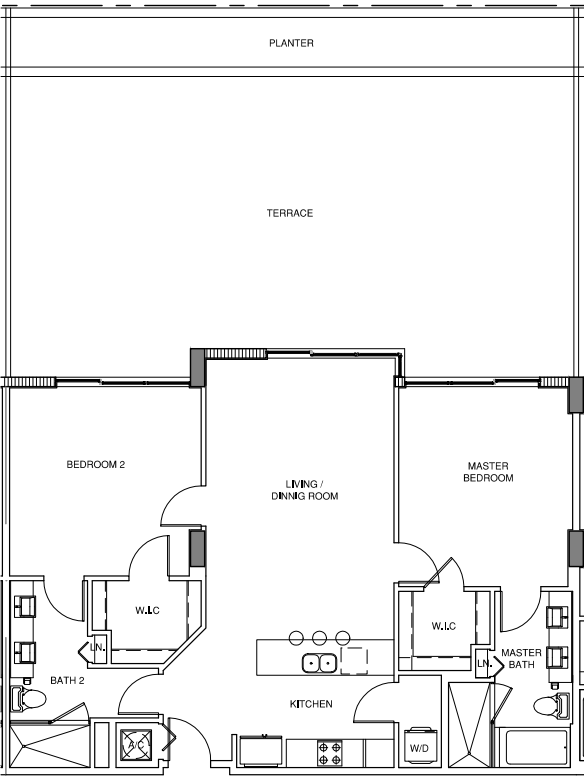
Unit G-R

3rd Floor

2 Bed / 2 Bath

Living Area: 1,153 Sq. Ft.

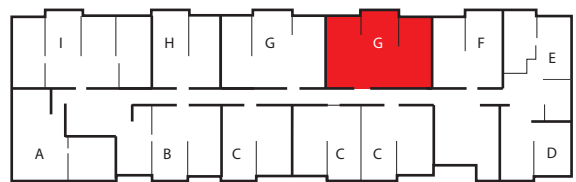
Balcony Area: 1,010 Sq. Ft.



ModernLiving

Stated dimensions are measured to the exterior boundaries of the exterior walls and the centerline of interior demising walls and in fact vary from the dimensions that would be determined by using the description and definition of the "Unit" set forth in the Declaration (which generally only includes the interior airspace between the perimeter walls and excludes interior structural components). For your reference, the area of the Unit, determined in accordance with those defined unit boundaries, is 1,077 sq. ft.. Note that measurements of rooms set forth on this floor plan are generally taken at the greatest points of each given room (as if the room were a perfect rectangle), without regard for any cutouts. Accordingly, the area of the actual room will typically be smaller than the product obtained by multiplying the stated length times width. All dimensions and ceiling heights are approximate and may vary with actual construction, and all floor plans and development plans are subject to change.

cassa brickell



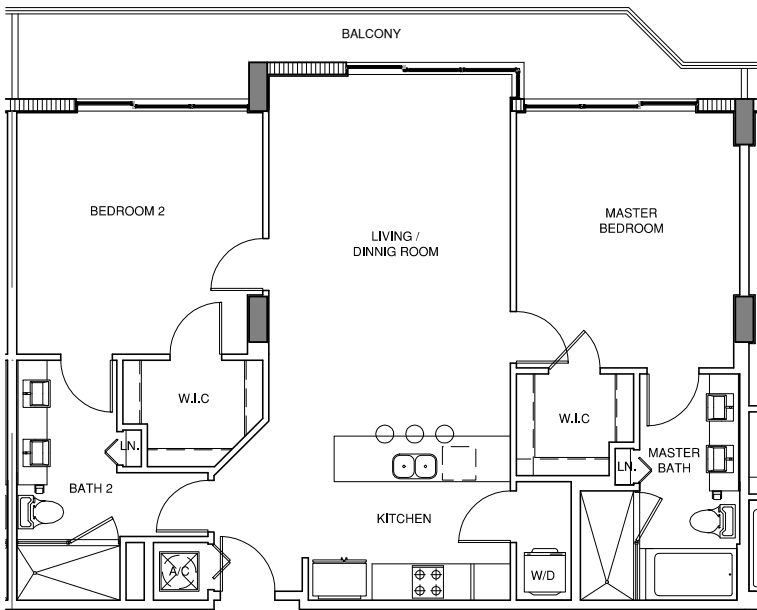
Unit G-R

4th & 7th Floor

2 Bed / 2 Bath

Living Area: 1,153 Sq. Ft.

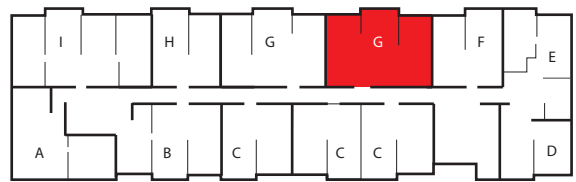
Balcony Area: 156 Sq. Ft.



ModernLiving

Stated dimensions are measured to the exterior boundaries of the exterior walls and the centerline of interior demising walls and in fact vary from the dimensions that would be determined by using the description and definition of the "Unit" set forth in the Declaration (which generally only includes the interior airspace between the perimeter walls and excludes interior structural components). For your reference, the area of the Unit, determined in accordance with those defined unit boundaries, is 1,077 sq. ft.. Note that measurements of rooms set forth on this floor plan are generally taken at the greatest points of each given room (as if the room were a perfect rectangle), without regard for any cutouts. Accordingly, the area of the actual room will typically be smaller than the product obtained by multiplying the stated length times width. All dimensions and ceiling heights are approximate and may vary with actual construction, and all floor plans and development plans are subject to change.

cassa brickell



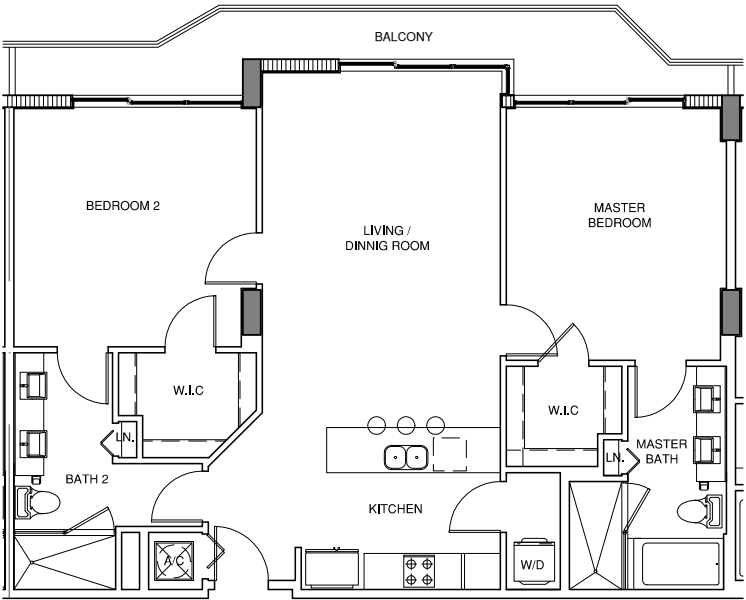
Unit G-R

5th & LPH Floor

2 Bed / 2 Bath

Living Area: 1,153 Sq. Ft.

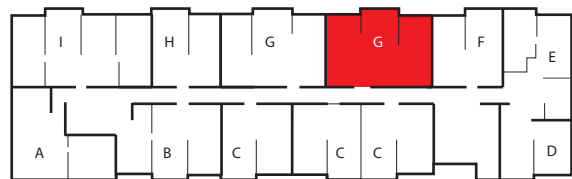
Balcony Area: 136 Sq. Ft.



ModernLiving

Stated dimensions are measured to the exterior boundaries of the exterior walls and the centerline of interior demising walls and in fact vary from the dimensions that would be determined by using the description and definition of the "Unit" set forth in the Declaration (which generally only includes the interior airspace between the perimeter walls and excludes interior structural components). For your reference, the area of the Unit, determined in accordance with those defined unit boundaries, is 1,077 sq. ft.. Note that measurements of rooms set forth on this floor plan are generally taken at the greatest points of each given room (as if the room were a perfect rectangle), without regard for any cutouts. Accordingly, the area of the actual room will typically be smaller than the product obtained by multiplying the stated length times width. All dimensions and ceiling heights are approximate and may vary with actual construction, and all floor plans and development plans are subject to change.

cassa brickell



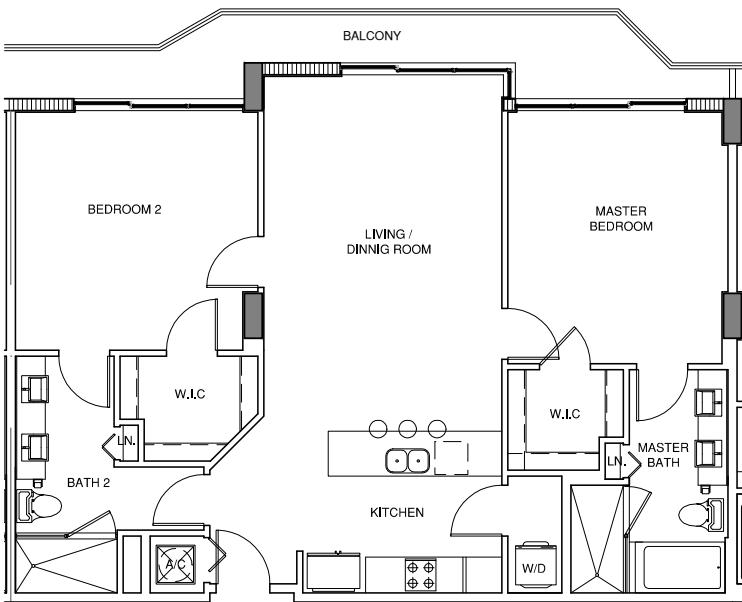
Unit G-R

6th Floor

2 Bed / 2 Bath

Living Area: 1,153 Sq. Ft.

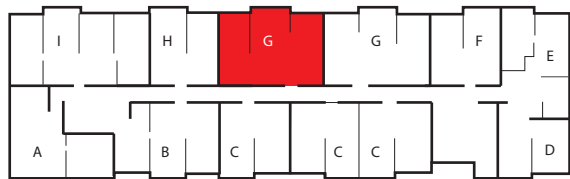
Balcony Area: 136 Sq. Ft.



ModernLiving

Stated dimensions are measured to the exterior boundaries of the exterior walls and the centerline of interior demising walls and in fact vary from the dimensions that would be determined by using the description and definition of the "Unit" set forth in the Declaration (which generally only includes the interior airspace between the perimeter walls and excludes interior structural components). For your reference, the area of the Unit, determined in accordance with those defined unit boundaries, is 1,077 sq. ft.. Note that measurements of rooms set forth on this floor plan are generally taken at the greatest points of each given room (as if the room were a perfect rectangle), without regard for any cutouts. Accordingly, the area of the actual room will typically be smaller than the product obtained by multiplying the stated length times width. All dimensions and ceiling heights are approximate and may vary with actual construction, and all floor plans and development plans are subject to change.

cassa brickell

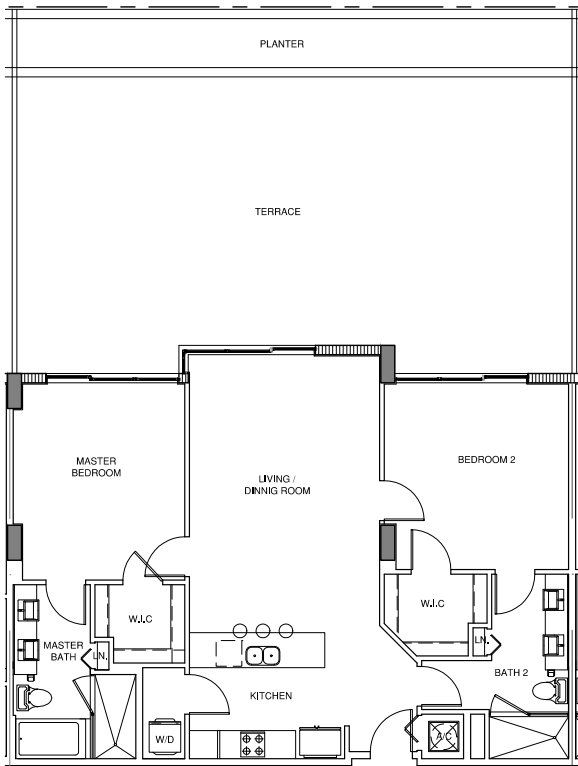


Unit G

3rd Floor
2 Bed / 2 Bath

Living Area: 1,153 Sq. Ft.

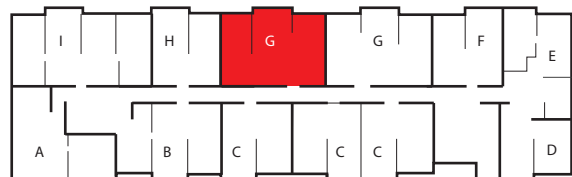
Balcony Area: 1,008 Sq. Ft.



ModernLiving

Stated dimensions are measured to the exterior boundaries of the exterior walls and the centerline of interior demising walls and in fact vary from the dimensions that would be determined by using the description and definition of the "Unit" set forth in the Declaration (which generally only includes the interior airspace between the perimeter walls and excludes interior structural components). For your reference, the area of the Unit, determined in accordance with those defined unit boundaries, is 1,077 sq. ft.. Note that measurements of rooms set forth on this floor plan are generally taken at the greatest points of each given room (as if the room were a perfect rectangle), without regard for any cutouts. Accordingly, the area of the actual room will typically be smaller than the product obtained by multiplying the stated length times width. All dimensions and ceiling heights are approximate and may vary with actual construction, and all floor plans and development plans are subject to change.

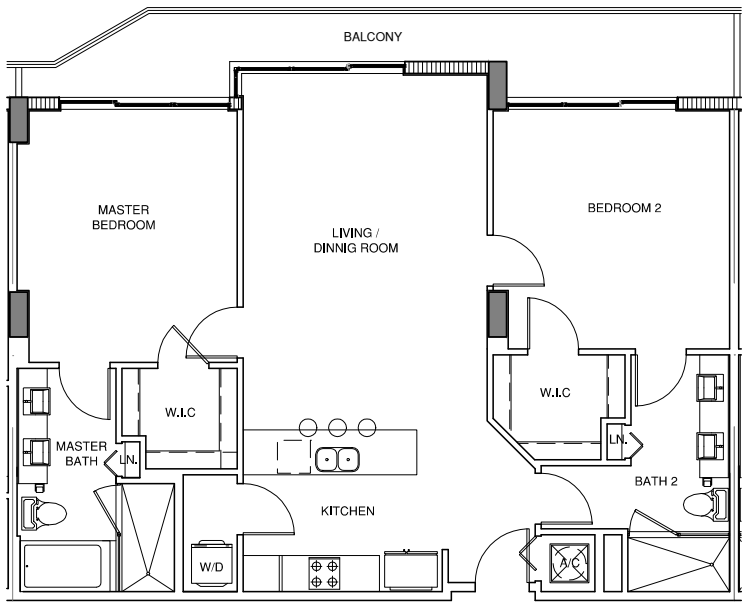
cassa brickell



Unit G

4th & 7th Floor
2 Bed / 2 Bath

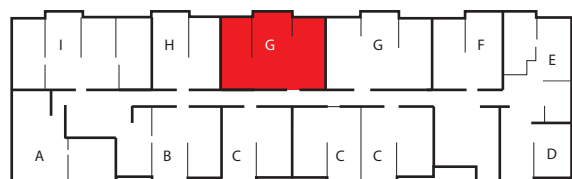
Living Area: 1,153 Sq. Ft.
Balcony Area: 156 Sq. Ft.



ModernLiving

Stated dimensions are measured to the exterior boundaries of the exterior walls and the centerline of interior demising walls and in fact vary from the dimensions that would be determined by using the description and definition of the "Unit" set forth in the Declaration (which generally only includes the interior airspace between the perimeter walls and excludes interior structural components). For your reference, the area of the Unit, determined in accordance with those defined unit boundaries, is 1,077sq. ft.. Note that measurements of rooms set forth on this floor plan are generally taken at the greatest points of each given room (as if the room were a perfect rectangle), without regard for any cutouts. Accordingly, the area of the actual room will typically be smaller than the product obtained by multiplying the stated length times width. All dimensions and ceiling heights are approximate and may vary with actual construction, and all floor plans and development plans are subject to change.

cassa brickell

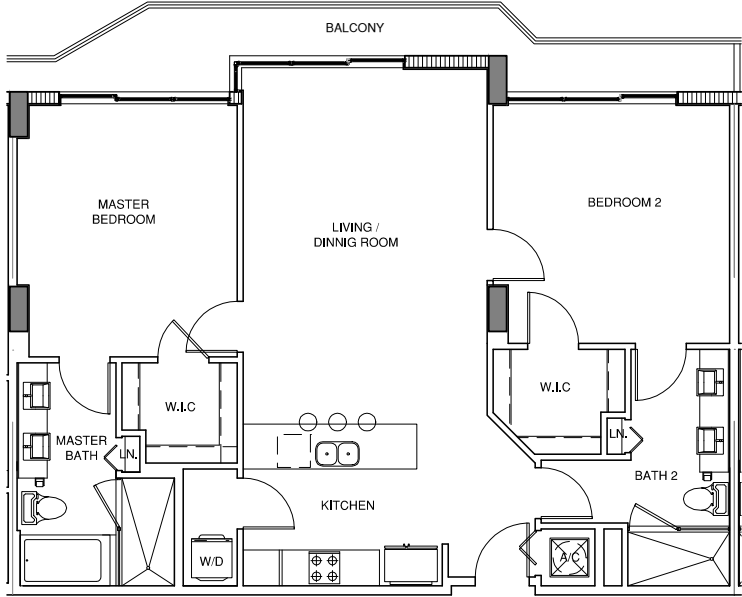


Unit G

5th & LPH Floor
2 Bed / 2 Bath

Living Area: 1,153 Sq. Ft.

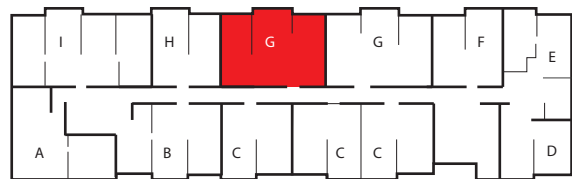
Balcony Area: 136 Sq. Ft.



ModernLiving

Stated dimensions are measured to the exterior boundaries of the exterior walls and the centerline of interior demising walls and in fact vary from the dimensions that would be determined by using the description and definition of the "Unit" set forth in the Declaration (which generally only includes the interior airspace between the perimeter walls and excludes interior structural components). For your reference, the area of the Unit, determined in accordance with those defined unit boundaries, is 1,077 sq. ft.. Note that measurements of rooms set forth on this floor plan are generally taken at the greatest points of each given room (as if the room were a perfect rectangle), without regard for any cutouts. Accordingly, the area of the actual room will typically be smaller than the product obtained by multiplying the stated length times width. All dimensions and ceiling heights are approximate and may vary with actual construction, and all floor plans and development plans are subject to change.

cassa brickell



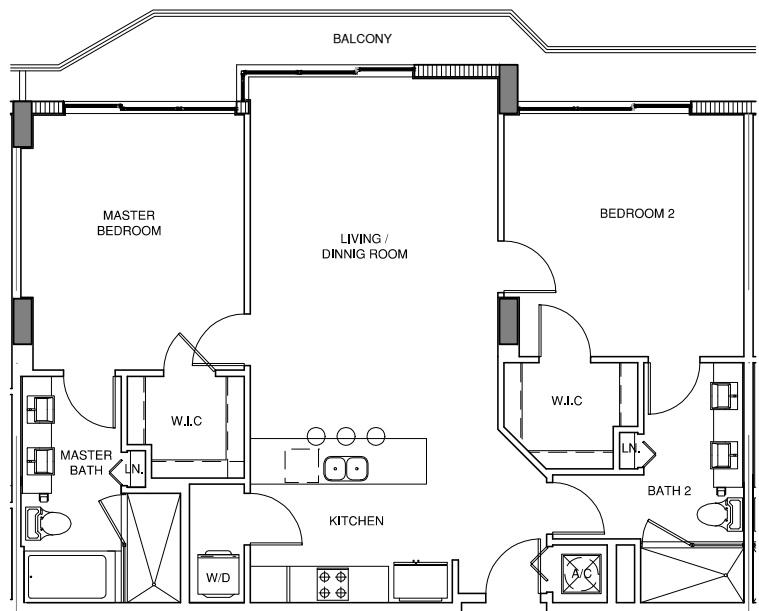
Unit G

6th Floor

2 Bed / 2 Bath

Living Area: 1,153 Sq. Ft.

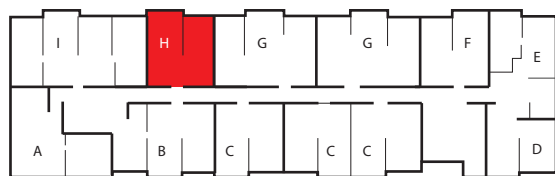
Balcony Area: 136 Sq. Ft.



ModernLiving

Stated dimensions are measured to the exterior boundaries of the exterior walls and the centerline of interior demising walls and in fact vary from the dimensions that would be determined by using the description and definition of the "Unit" set forth in the Declaration (which generally only includes the interior airspace between the perimeter walls and excludes interior structural components). For your reference, the area of the Unit, determined in accordance with those defined unit boundaries, is 1,077 sq. ft.. Note that measurements of rooms set forth on this floor plan are generally taken at the greatest points of each given room (as if the room were a perfect rectangle), without regard for any cutouts. Accordingly, the area of the actual room will typically be smaller than the product obtained by multiplying the stated length times width. All dimensions and ceiling heights are approximate and may vary with actual construction, and all floor plans and development plans are subject to change.

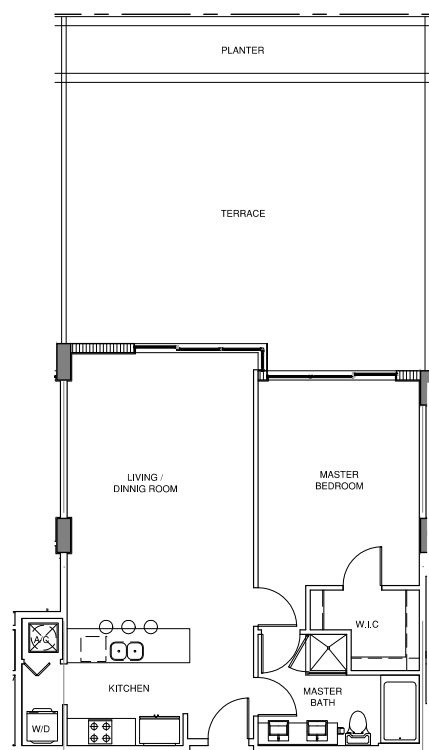
cassa brickell



Unit H

3rd Floor
1 Bed / 1 Bath

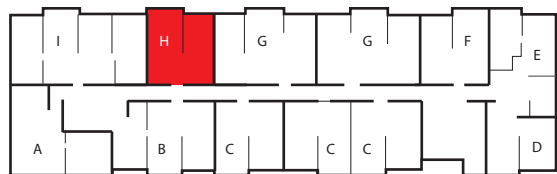
Living Area: 798 Sq. Ft.
Balcony Area: 664 Sq. Ft.



ModernLiving

Stated dimensions are measured to the exterior boundaries of the exterior walls and the centerline of interior demising walls and in fact vary from the dimensions that would be determined by using the description and definition of the "Unit" set forth in the Declaration (which generally only includes the interior airspace between the perimeter walls and excludes interior structural components). For your reference, the area of the Unit, determined in accordance with those defined unit boundaries, is 746 sq. ft.. Note that measurements of rooms set forth on this floor plan are generally taken at the greatest points of each given room (as if the room were a perfect rectangle), without regard for any cutouts. Accordingly, the area of the actual room will typically be smaller than the product obtained by multiplying the stated length times width. All dimensions and ceiling heights are approximate and may vary with actual construction, and all floor plans and development plans are subject to change.

cassa brickell



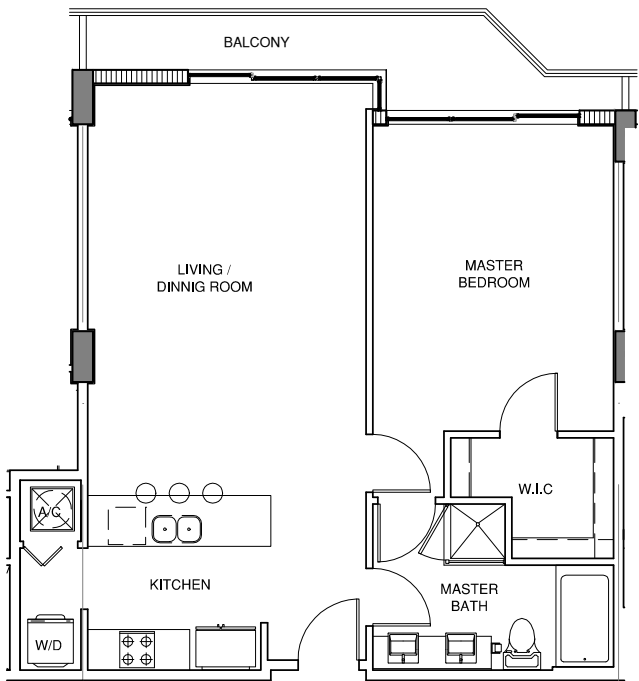
Unit H

4th & 7th Floor

1 Bed / 1 Bath

Living Area: 798 Sq. Ft.

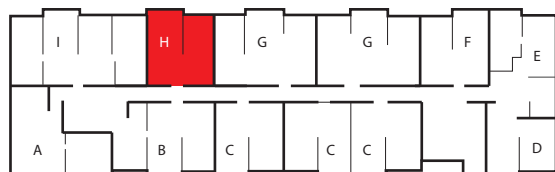
Balcony Area: 88 Sq. Ft.



ModernLiving

Stated dimensions are measured to the exterior boundaries of the exterior walls and the centerline of interior demising walls and in fact vary from the dimensions that would be determined by using the description and definition of the "Unit" set forth in the Declaration (which generally only includes the interior airspace between the perimeter walls and excludes interior structural components). For your reference, the area of the Unit, determined in accordance with those defined unit boundaries, is 746 sq. ft.. Note that measurements of rooms set forth on this floor plan are generally taken at the greatest points of each given room (as if the room were a perfect rectangle), without regard for any cutouts. Accordingly, the area of the actual room will typically be smaller than the product obtained by multiplying the stated length times width. All dimensions and ceiling heights are approximate and may vary with actual construction, and all floor plans and development plans are subject to change.

cassa brickell



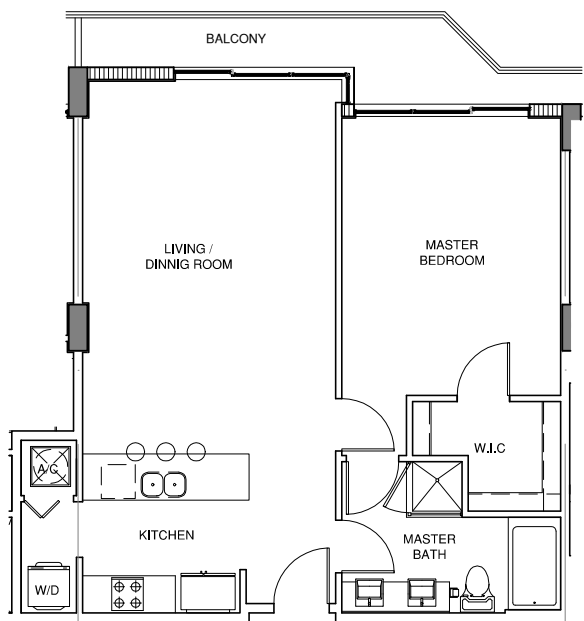
Unit H

5th & LPH Floor

1 Bed / 1 Bath

Living Area: 798 Sq. Ft.

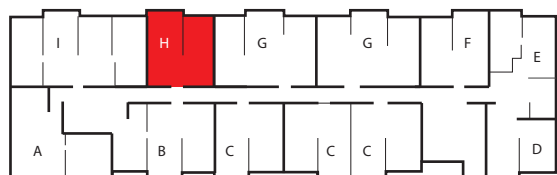
Balcony Area: 88 Sq. Ft.



ModernLiving

Stated dimensions are measured to the exterior boundaries of the exterior walls and the centerline of interior demising walls and in fact vary from the dimensions that would be determined by using the description and definition of the "Unit" set forth in the Declaration (which generally only includes the interior airspace between the perimeter walls and excludes interior structural components). For your reference, the area of the Unit, determined in accordance with those defined unit boundaries, is 746 sq. ft.. Note that measurements of rooms set forth on this floor plan are generally taken at the greatest points of each given room (as if the room were a perfect rectangle), without regard for any cutouts. Accordingly, the area of the actual room will typically be smaller than the product obtained by multiplying the stated length times width. All dimensions and ceiling heights are approximate and may vary with actual construction, and all floor plans and development plans are subject to change.

cassa brickell



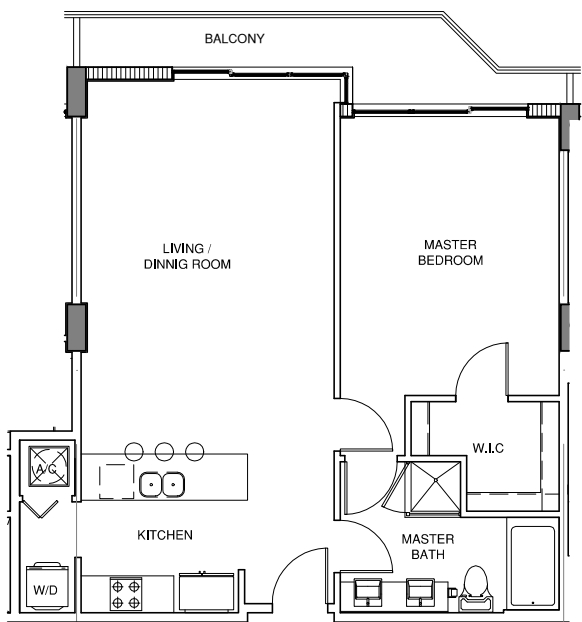
Unit H

6th Floor

1 Bed / 1 Bath

Living Area: 798 Sq. Ft.

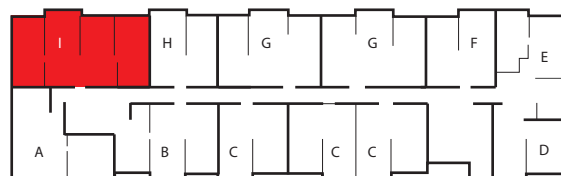
Balcony Area: 88 Sq. Ft.



ModernLiving

Stated dimensions are measured to the exterior boundaries of the exterior walls and the centerline of interior demising walls and in fact vary from the dimensions that would be determined by using the description and definition of the "Unit" set forth in the Declaration (which generally only includes the interior airspace between the perimeter walls and excludes interior structural components). For your reference, the area of the Unit, determined in accordance with those defined unit boundaries, is 746 sq. ft.. Note that measurements of rooms set forth on this floor plan are generally taken at the greatest points of each given room (as if the room were a perfect rectangle), without regard for any cutouts. Accordingly, the area of the actual room will typically be smaller than the product obtained by multiplying the stated length times width. All dimensions and ceiling heights are approximate and may vary with actual construction, and all floor plans and development plans are subject to change.

cassa brickell



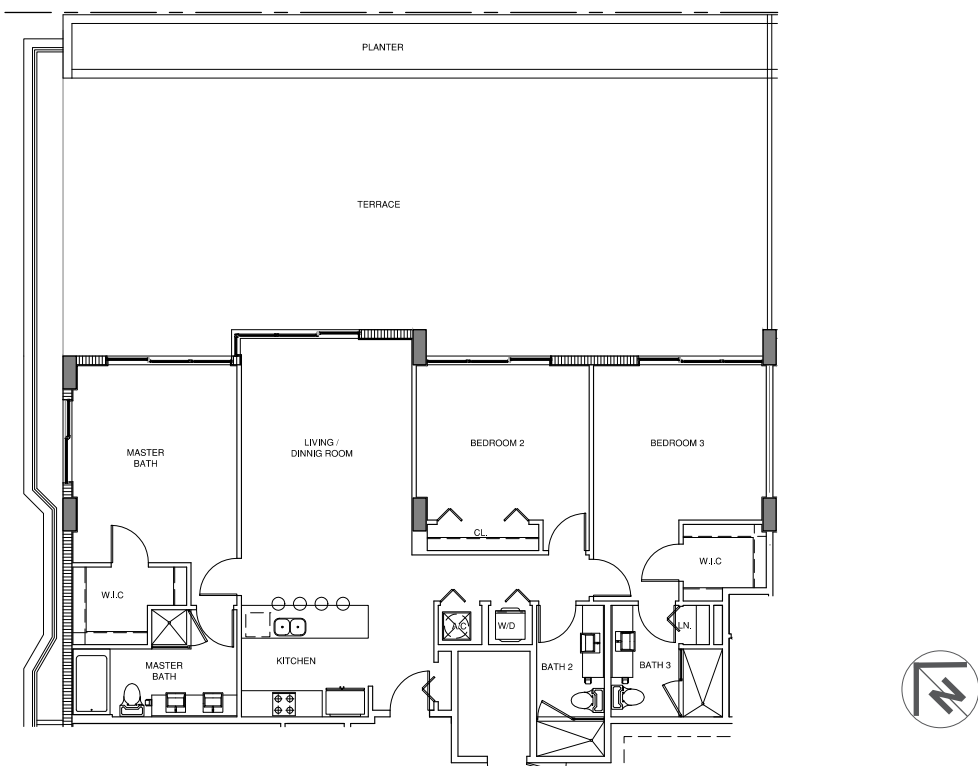
Unit I

3rd Floor

3 Bed / 3 Bath

Living Area: 1,478 Sq. Ft.

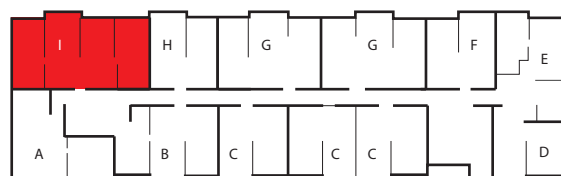
Balcony Area: 1,508 Sq. Ft.



ModernLiving

Stated dimensions are measured to the exterior boundaries of the exterior walls and the centerline of interior demising walls and in fact vary from the dimensions that would be determined by using the description and definition of the "Unit" set forth in the Declaration (which generally only includes the interior airspace between the perimeter walls and excludes interior structural components). For your reference, the area of the Unit, determined in accordance with those defined unit boundaries, is 1,380 sq. ft.. Note that measurements of rooms set forth on this floor plan are generally taken at the greatest points of each given room (as if the room were a perfect rectangle), without regard for any cutouts. Accordingly, the area of the actual room will typically be smaller than the product obtained by multiplying the stated length times width. All dimensions and ceiling heights are approximate and may vary with actual construction, and all floor plans and development plans are subject to change.

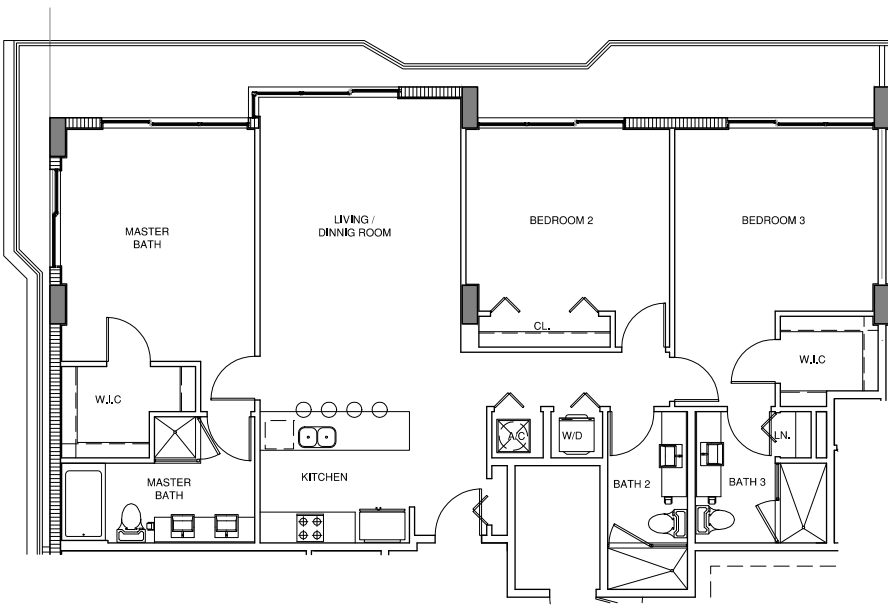
cassa brickell



Unit I

4th & 7th Floor
3 Bed / 3 Bath

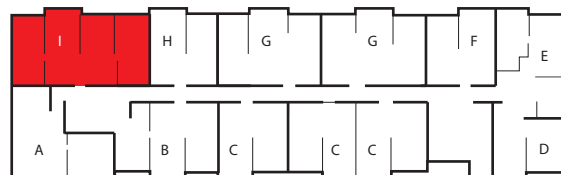
Living Area: 1,478 Sq. Ft.
Balcony Area: 289 Sq. Ft.



ModernLiving

Stated dimensions are measured to the exterior boundaries of the exterior walls and the centerline of interior demising walls and in fact vary from the dimensions that would be determined by using the description and definition of the "Unit" set forth in the Declaration (which generally only includes the interior airspace between the perimeter walls and excludes interior structural components). For your reference, the area of the Unit, determined in accordance with those defined unit boundaries, is 1,380 sq. ft.. Note that measurements of rooms set forth on this floor plan are generally taken at the greatest points of each given room (as if the room were a perfect rectangle), without regard for any cutouts. Accordingly, the area of the actual room will typically be smaller than the product obtained by multiplying the stated length times width. All dimensions and ceiling heights are approximate and may vary with actual construction, and all floor plans and development plans are subject to change.

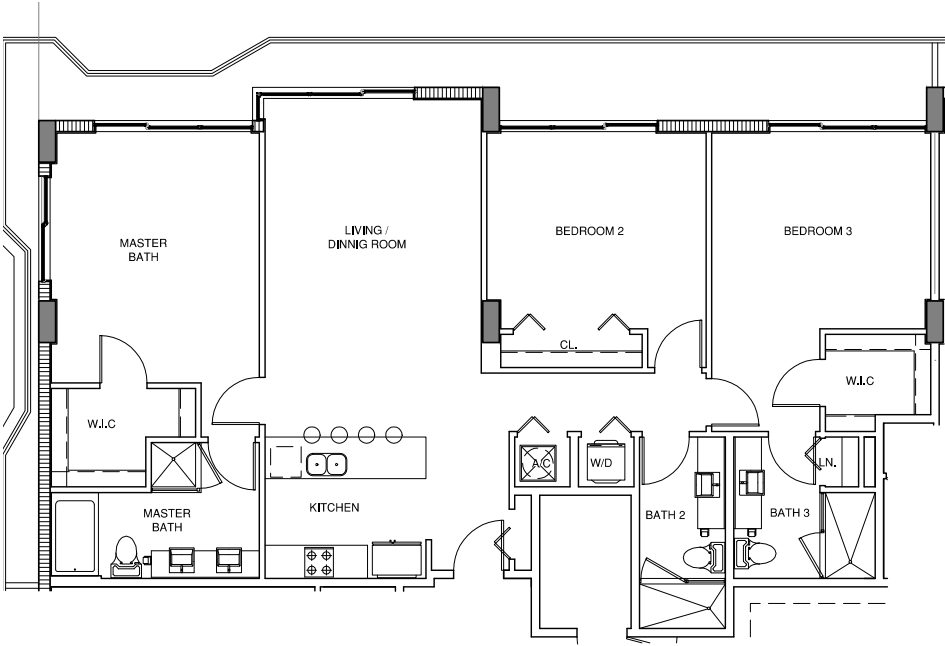
cassa brickell



Unit I

5th & LPH Floor
3 Bed / 3 Bath

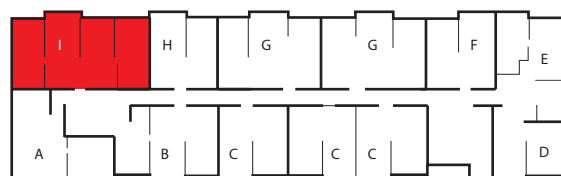
Living Area: 1,478 Sq. Ft.
Balcony Area: 300 Sq. Ft.



ModernLiving

Stated dimensions are measured to the exterior boundaries of the exterior walls and the centerline of interior demising walls and in fact vary from the dimensions that would be determined by using the description and definition of the "Unit" set forth in the Declaration (which generally only includes the interior airspace between the perimeter walls and excludes interior structural components). For your reference, the area of the Unit, determined in accordance with those defined unit boundaries, is 1,380 sq. ft.. Note that measurements of rooms set forth on this floor plan are generally taken at the greatest points of each given room (as if the room were a perfect rectangle), without regard for any cutouts. Accordingly, the area of the actual room will typically be smaller than the product obtained by multiplying the stated length times width. All dimensions and ceiling heights are approximate and may vary with actual construction, and all floor plans and development plans are subject to change.

cassa brickell

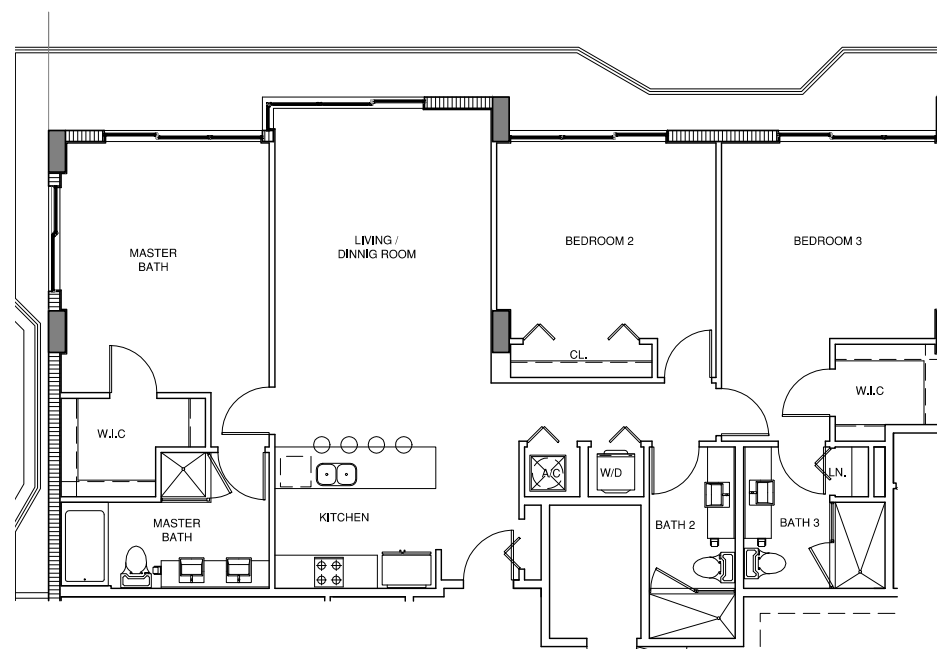


Unit I

6th Floor
3 Bed / 3 Bath

Living Area: 1,478 Sq. Ft.

Balcony Area: 289 Sq. Ft.



ModernLiving

Stated dimensions are measured to the exterior boundaries of the exterior walls and the centerline of interior demising walls and in fact vary from the dimensions that would be determined by using the description and definition of the "Unit" set forth in the Declaration (which generally only includes the interior airspace between the perimeter walls and excludes interior structural components). For your reference, the area of the Unit, determined in accordance with those defined unit boundaries, is 1,380 sq. ft.. Note that measurements of rooms set forth on this floor plan are generally taken at the greatest points of each given room (as if the room were a perfect rectangle), without regard for any cutouts. Accordingly, the area of the actual room will typically be smaller than the product obtained by multiplying the stated length times width. All dimensions and ceiling heights are approximate and may vary with actual construction, and all floor plans and development plans are subject to change.

cassa brickell

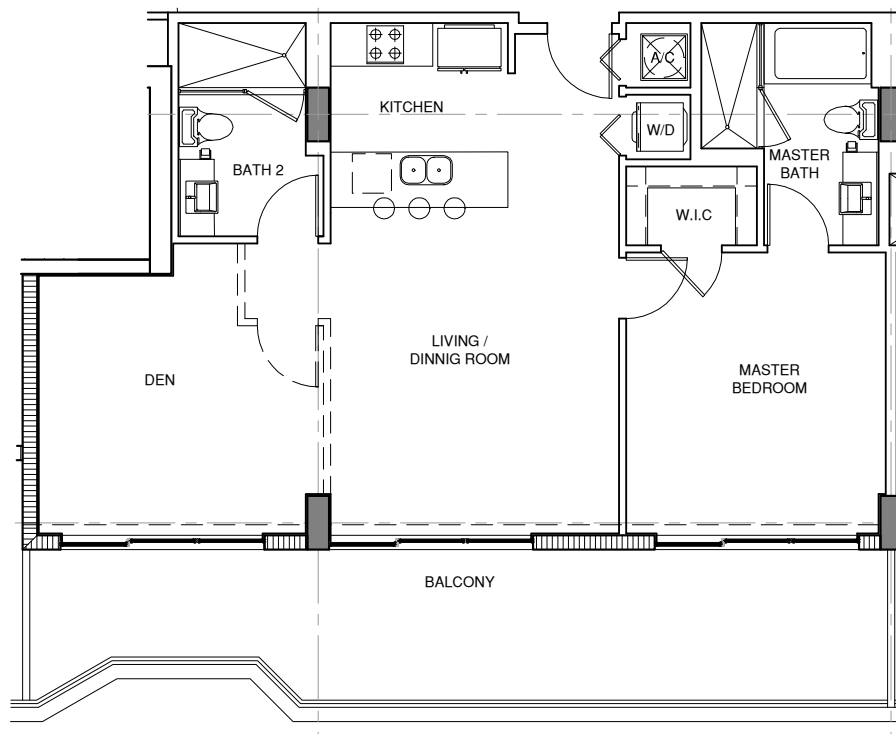
Penthouse 1

9th Floor

1 Bed / 2 Bath

Living Area: 927Sq. Ft.

Balcony Area: 304 Sq. Ft.



ModernLiving

Stated dimensions are measured to the exterior boundaries of the exterior walls and the centerline of interior demising walls and in fact vary from the dimensions that would be determined by using the description and definition of the "Unit" set forth in the Declaration (which generally only includes the interior airspace between the perimeter walls and excludes interior structural components). For your reference, the area of the Unit, determined in accordance with those defined unit boundaries, is 859 sq. ft.. Note that measurements of rooms set forth on this floor plan are generally taken at the greatest points of each given room (as if the room were a perfect rectangle), without regard for any cutouts. Accordingly, the area of the actual room will typically be smaller than the product obtained by multiplying the stated length times width. All dimensions and ceiling heights are approximate and may vary with actual construction, and all floor plans and development plans are subject to change.

cassa brickell

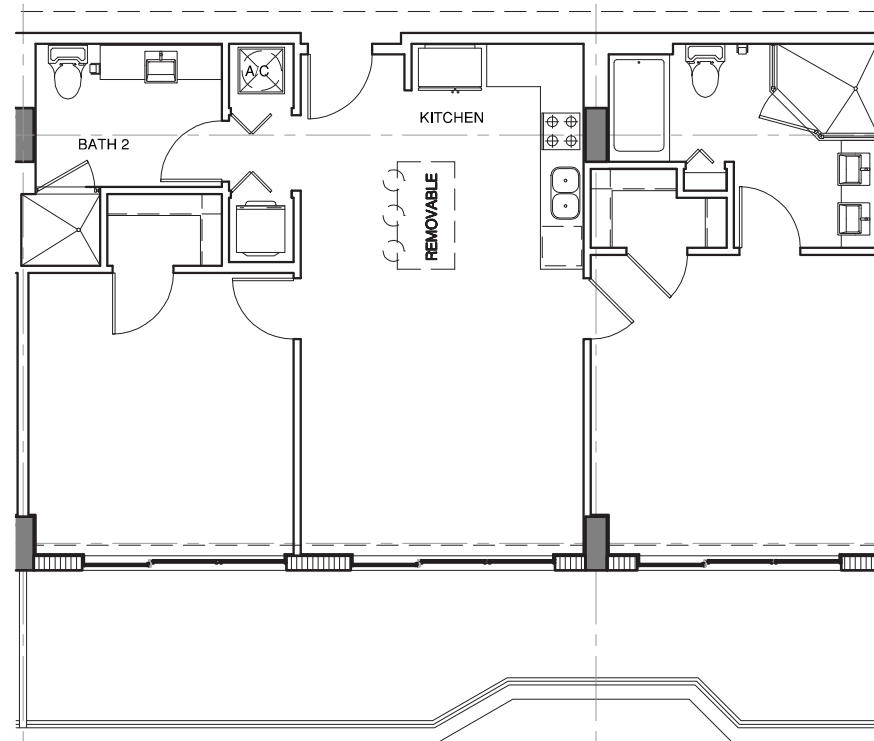
Penthouse 2

9th Floor

2 Bed / 2 Bath

Living Area: 999 Sq. Ft.

Balcony Area: 298 Sq. Ft.



ModernLiving

Stated dimensions are measured to the exterior boundaries of the exterior walls and the centerline of interior demising walls and in fact vary from the dimensions that would be determined by using the description and definition of the "Unit" set forth in the Declaration (which generally only includes the interior airspace between the perimeter walls and excludes interior structural components). For your reference, the area of the Unit, determined in accordance with those defined unit boundaries, is 925 sq. ft.. Note that measurements of rooms set forth on this floor plan are generally taken at the greatest points of each given room (as if the room were a perfect rectangle), without regard for any cutouts. Accordingly, the area of the actual room will typically be smaller than the product obtained by multiplying the stated length times width. All dimensions and ceiling heights are approximate and may vary with actual construction, and all floor plans and development plans are subject to change.

cassa brickell

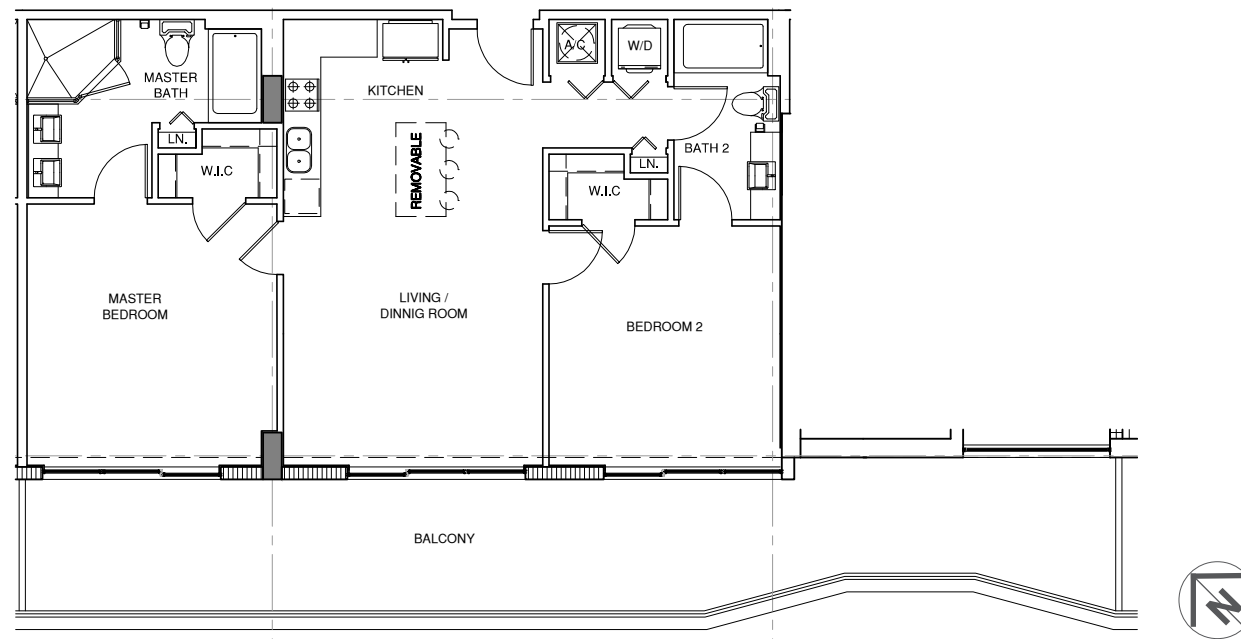
Penthouse 3

9th Floor

2 Bed / 2 Bath

Living Area: 1,021 Sq. Ft.

Balcony Area: 459 Sq. Ft.



ModernLiving

Stated dimensions are measured to the exterior boundaries of the exterior walls and the centerline of interior demising walls and in fact vary from the dimensions that would be determined by using the description and definition of the "Unit" set forth in the Declaration (which generally only includes the interior airspace between the perimeter walls and excludes interior structural components). For your reference, the area of the Unit, determined in accordance with those defined unit boundaries, is 942 sq. ft.. Note that measurements of rooms set forth on this floor plan are generally taken at the greatest points of each given room (as if the room were a perfect rectangle), without regard for any cutouts. Accordingly, the area of the actual room will typically be smaller than the product obtained by multiplying the stated length times width. All dimensions and ceiling heights are approximate and may vary with actual construction, and all floor plans and development plans are subject to change.

cassa brickell

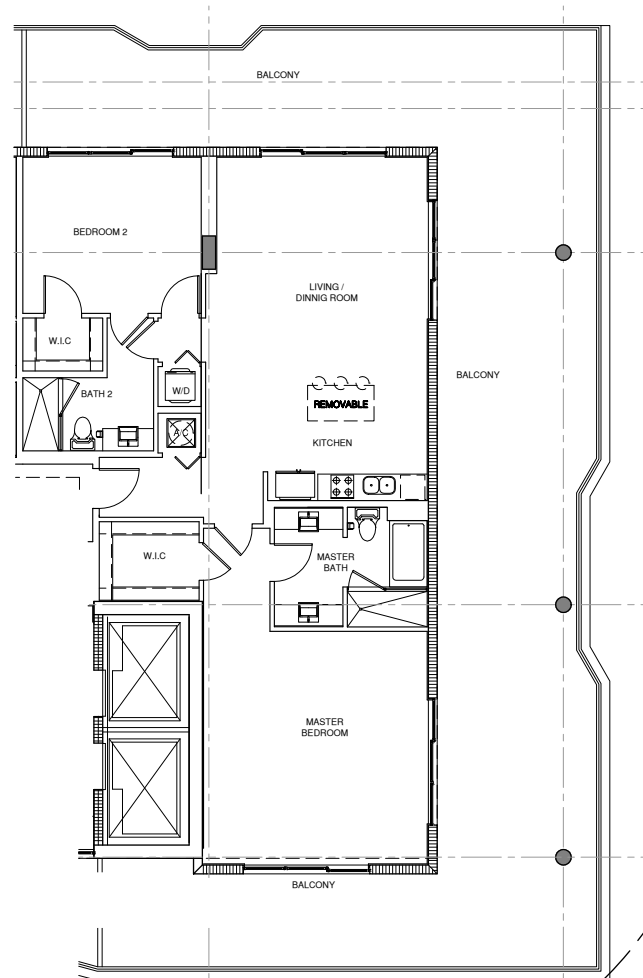
Penthouse 4

9th Floor

2 Bed / 2 Bath

Living Area: 1,392 Sq. Ft.

Balcony Area: 1,395 Sq. Ft.



ModernLiving

Stated dimensions are measured to the exterior boundaries of the exterior walls and the centerline of interior demising walls and in fact vary from the dimensions that would be determined by using the description and definition of the "Unit" set forth in the Declaration (which generally only includes the interior airspace between the perimeter walls and excludes interior structural components). For your reference, the area of the Unit, determined in accordance with those defined unit boundaries, is 1,259 sq. ft.. Note that measurements of rooms set forth on this floor plan are generally taken at the greatest points of each given room (as if the room were a perfect rectangle), without regard for any cutouts. Accordingly, the area of the actual room will typically be smaller than the product obtained by multiplying the stated length times width. All dimensions and ceiling heights are approximate and may vary with actual construction, and all floor plans and development plans are subject to change.

cassa brickell

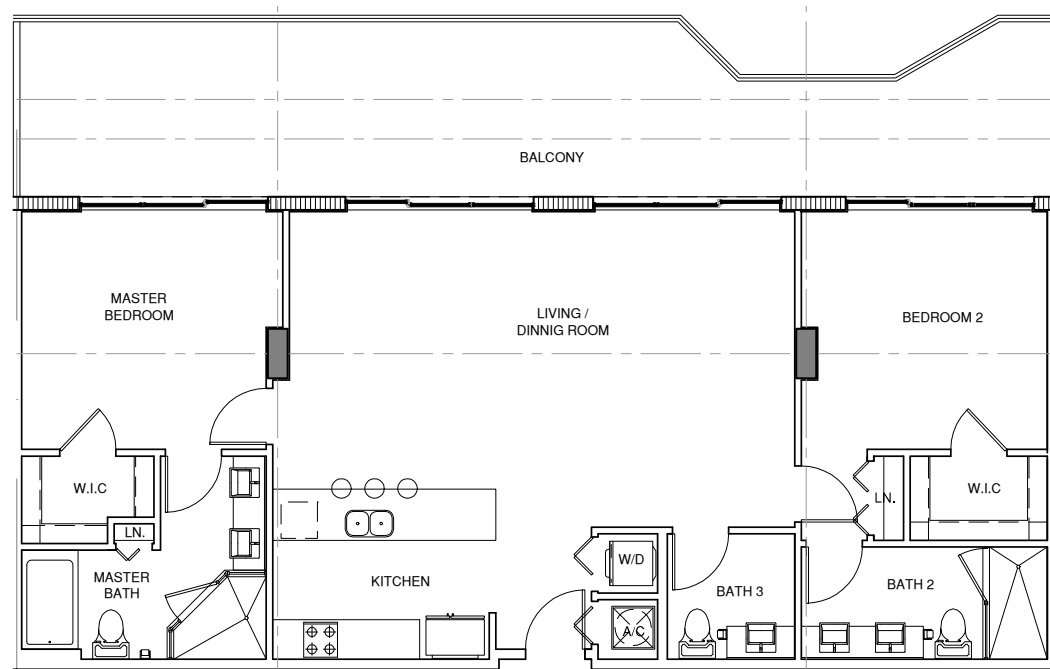
Penthouse 5

9th Floor

2 Bed / 2 Bath

Living Area: 1,242 Sq. Ft.

Balcony Area: 446 Sq. Ft.



ModernLiving

Stated dimensions are measured to the exterior boundaries of the exterior walls and the centerline of interior demising walls and in fact vary from the dimensions that would be determined by using the description and definition of the "Unit" set forth in the Declaration (which generally only includes the interior airspace between the perimeter walls and excludes interior structural components). For your reference, the area of the Unit, determined in accordance with those defined unit boundaries, is 1,168 sq. ft.. Note that measurements of rooms set forth on this floor plan are generally taken at the greatest points of each given room (as if the room were a perfect rectangle), without regard for any cutouts. Accordingly, the area of the actual room will typically be smaller than the product obtained by multiplying the stated length times width. All dimensions and ceiling heights are approximate and may vary with actual construction, and all floor plans and development plans are subject to change.

cassa brickell

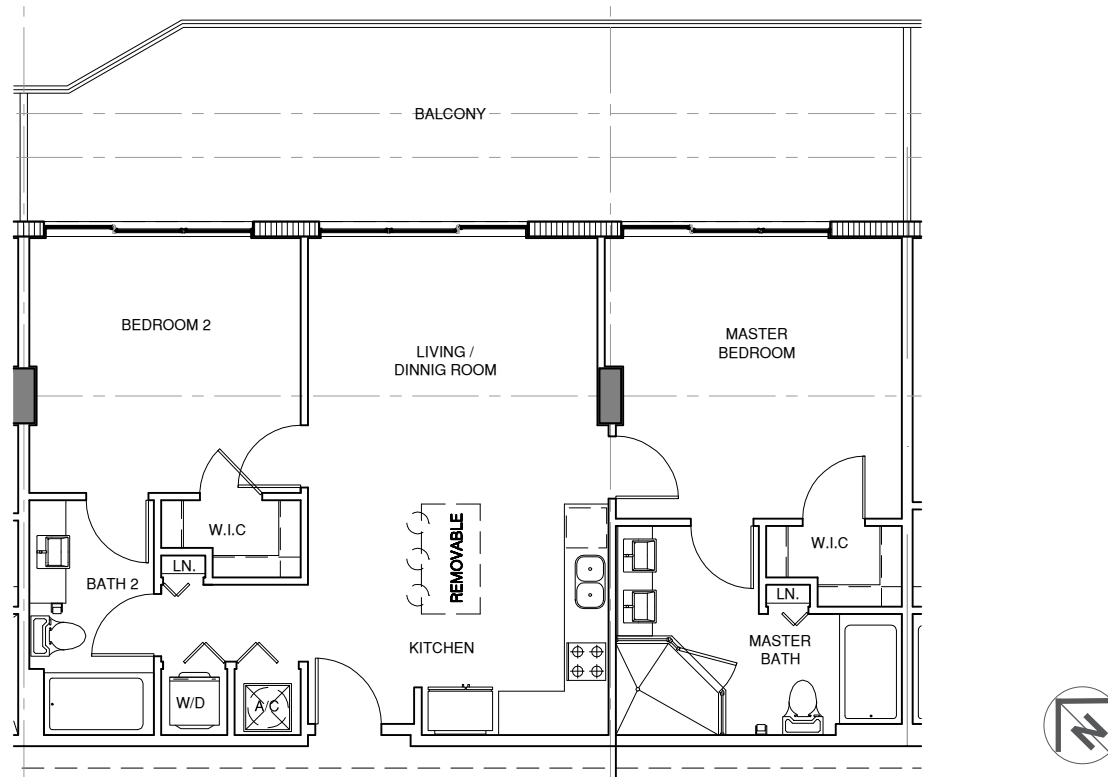
Penthouse 6

9th Floor

2 Bed / 2 Bath

Living Area: 955 Sq. Ft.

Balcony Area: 354 Sq. Ft.



ModernLiving

Stated dimensions are measured to the exterior boundaries of the exterior walls and the centerline of interior demising walls and in fact vary from the dimensions that would be determined by using the description and definition of the "Unit" set forth in the Declaration (which generally only includes the interior airspace between the perimeter walls and excludes interior structural components). For your reference, the area of the Unit, determined in accordance with those defined unit boundaries, is 891 sq. ft.. Note that measurements of rooms set forth on this floor plan are generally taken at the greatest points of each given room (as if the room were a perfect rectangle), without regard for any cutouts. Accordingly, the area of the actual room will typically be smaller than the product obtained by multiplying the stated length times width. All dimensions and ceiling heights are approximate and may vary with actual construction, and all floor plans and development plans are subject to change.

cassa brickell

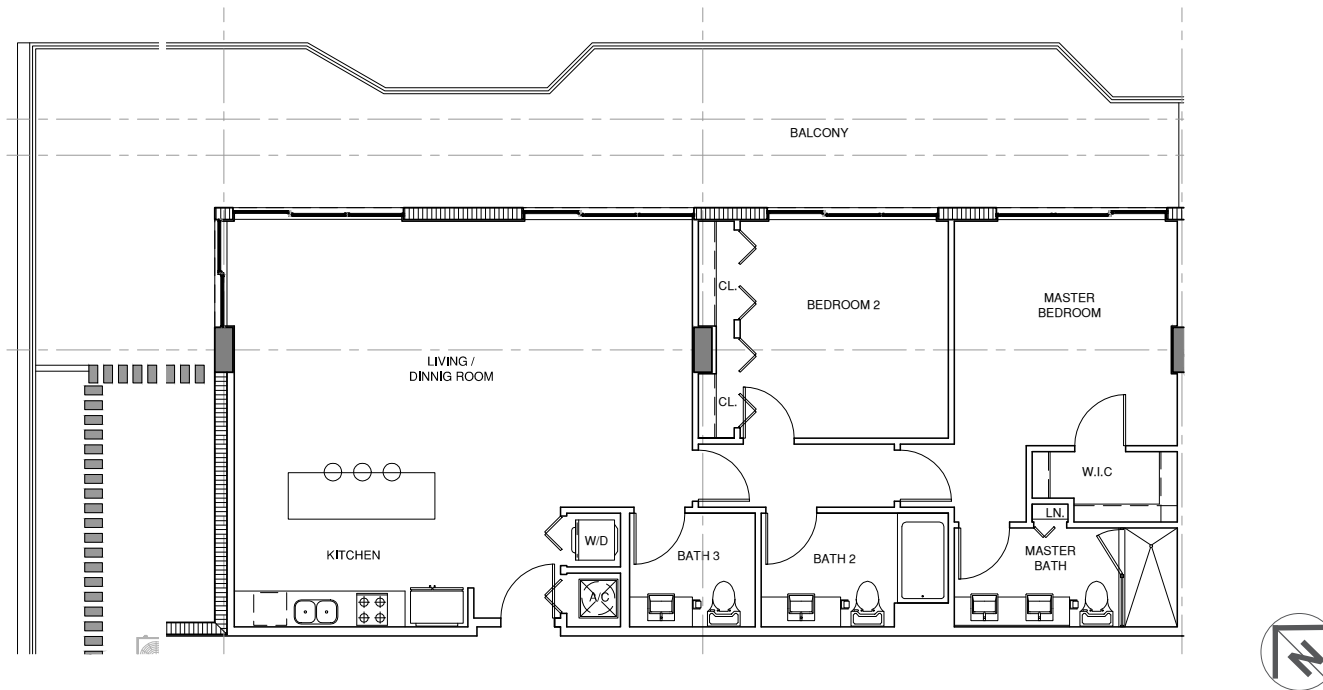
Penthouse 7

9th Floor

2 Bed / 2.5 Bath

Living Area: 1,281 Sq. Ft.

Balcony Area: 979 Sq. Ft.



ModernLiving

Stated dimensions are measured to the exterior boundaries of the exterior walls and the centerline of interior demising walls and in fact vary from the dimensions that would be determined by using the description and definition of the "Unit" set forth in the Declaration (which generally only includes the interior airspace between the perimeter walls and excludes interior structural components). For your reference, the area of the Unit, determined in accordance with those defined unit boundaries, is 1,183 sq. ft.. Note that measurements of rooms set forth on this floor plan are generally taken at the greatest points of each given room (as if the room were a perfect rectangle), without regard for any cutouts. Accordingly, the area of the actual room will typically be smaller than the product obtained by multiplying the stated length times width. All dimensions and ceiling heights are approximate and may vary with actual construction, and all floor plans and development plans are subject to change.